

ABI3 Antibody



PACO41222

Product Information

Size:

50ug

Reactivity:

Human, Mouse

Source:

Rabbit

Isotype:

IgG

Applications:

ELISA, WB, IHC

Recommended dilutions:

ELISA:1:2000-1:10000, WB:1:500-1:2000,
IHC:1:20-1:200

Protein Background:

May inhibit tumor metastasis. In vitro, reduces cell motility.

Gene ID:

ABI3

Uniprot

Q9P2A4

Synonyms:

ABI gene family member 3 (New molecule including SH3) (Nesh), ABI3, NESH

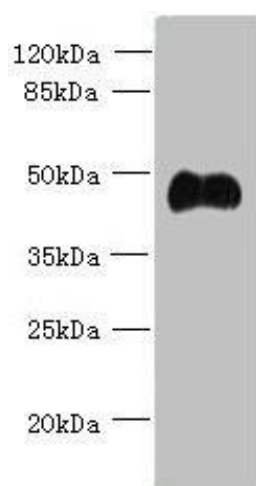
Immunogen:

Recombinant Human ABI gene family member 3 protein (1-366AA).

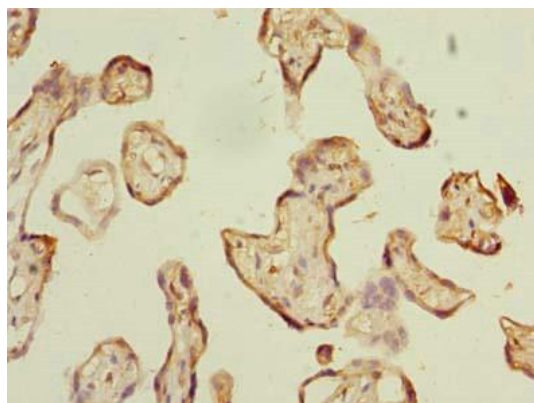
Storage:

Preservative: 0.03% Proclin 300. Constituents: 50% Glycerol, 0.01M PBS, PH 7.4

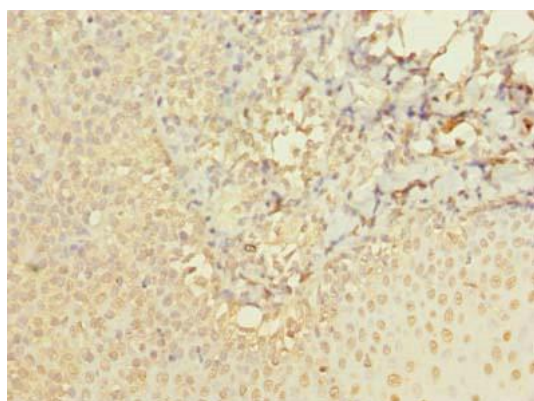
Product Images



Western blot. All lanes: ABI3 antibody at 5 μ g/ml + Mouse heart tissue. Secondary. Goat polyclonal to rabbit IgG at 1/10000 dilution. Predicted band size: 40, 39 kDa. Observed band size: 40 kDa.



Immunohistochemistry of paraffin-embedded human placenta tissue using PACO41222 at dilution of 1:100.



Immunohistochemistry of paraffin-embedded human tonsil tissue using PACO41222 at dilution of 1:100.