

Product Information

Size:

50ug

Reactivity:

Human

Source:

Rabbit

Isotype:

IgG

Applications:

ELISA, IHC, IF

Recommended dilutions:

ELISA:1:2000-1:10000, IHC:1:20-1:200,
IF:1:50-1:200

Protein Background:

Mitochondrial transporter that imports/exports pyrimidine nucleotides into and from mitochondria. Transports preferentially uracil, thymine, and cytosine (deoxy)nucleoside di- and triphosphates by an antiport mechanism. Also transports guanine but not adenine (deoxy)nucleotides. Is inhibited strongly by pyridoxal 5'-phosphate, 4,7-diphenyl-1,10-phenanthroline, tannic acid, and mercurials (mercury dichloride, mersalyl acid, p-hydroxymercuribenzoate). Participates in mitochondrial genome maintenance, regulation of mitochondrial membrane potential and mitochondrial respiration. Upon INS or IGF1 stimulation regulates cell growth and proliferation by controlling mitochondrial DNA replication and transcription, the ratio of mitochondria-to nuclear-encoded components of the electron transport chain resulting in control of mitochondrial ROS production. Participates in dendritic cell endocytosis and may associate with mitochondrial oxidative phosphorylation.

Gene ID:

SLC25A33

Uniprot

Q9BSK2

Synonyms:

Solute carrier family 25 member 33 (Bone marrow stromal cell mitochondrial carrier protein) (BMSC-MCP) (HuBMSC-MCP) (Protein PNC1), SLC25A33

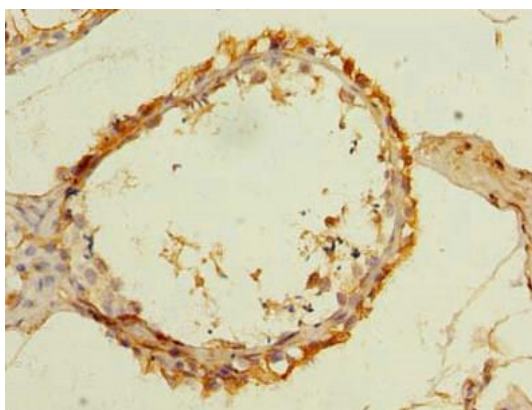
Immunogen:

Recombinant Human Solute carrier family 25 member 33 protein (66-120AA).

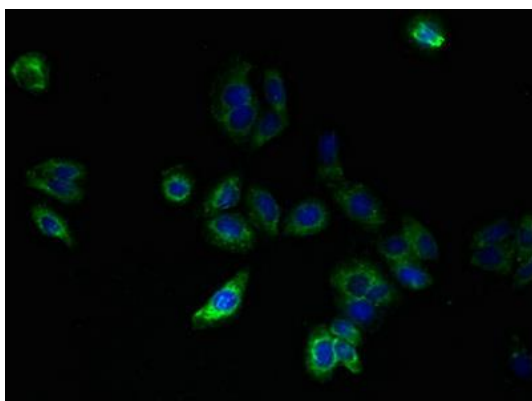
Storage:

Preservative: 0.03% Proclin 300. Constituents: 50% Glycerol, 0.01M PBS, PH 7.4

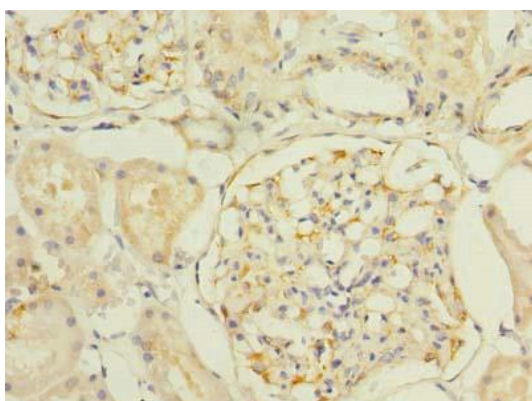
Product Images



Immunohistochemistry of paraffin-embedded human testis tissue using PACO41238 at dilution of 1:100.



Immunofluorescent analysis of HepG2 cells using PACO41238 at dilution of 1:100 and Alexa Fluor 488-conjugated AffiniPure Goat Anti-Rabbit IgG(H+L).



Immunohistochemistry of paraffin-embedded human kidney tissue using PACO41238 at dilution of 1:100.