

TMEM243 Antibody



PACO41246

Product Information

Size:

50ug

Reactivity:

Human

Source:

Rabbit

Isotype:

IgG

Applications:

ELISA, IHC, IF

Recommended dilutions:

ELISA:1:2000-1:10000, IHC:1:20-1:200,
IF:1:50-1:200

Protein Background:**Gene ID:**

TMEM243

Uniprot

Q9BU79

Synonyms:

Transmembrane protein 243 (MDR1- and mitochondrial taxol resistance-associated protein) (MM-TRAG), TMEM243, C7orf23

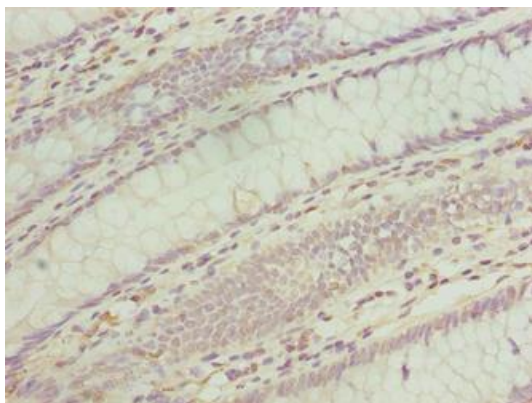
Immunogen:

Recombinant Human Transmembrane protein 243 protein (1-31AA).

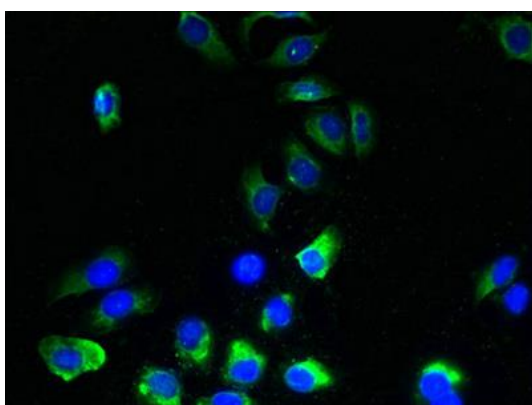
Storage:

Preservative: 0.03% Proclin 300. Constituents: 50% Glycerol, 0.01M PBS, PH 7.4

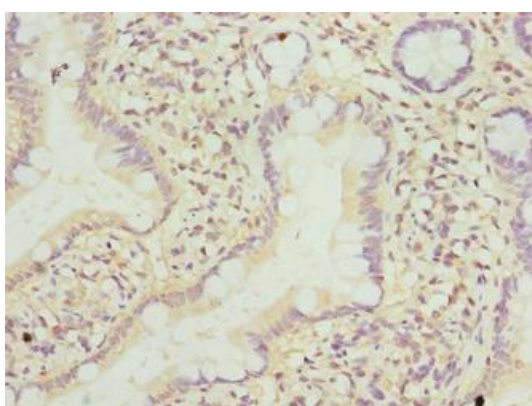
Product Images



Immunohistochemistry of paraffin-embedded human colon cancer using PACO41246 at dilution of 1:100.



Immunofluorescent analysis of A549 cells using PACO41246 at dilution of 1:100 and Alexa Fluor 488-conjugated AffiniPure Goat Anti-Rabbit IgG(H+L).



Immunohistochemistry of paraffin-embedded human small intestine tissue using PACO41246 at dilution of 1:100.