

# ABHD14A Antibody



PACO41250

---

## Product Information

**Size:**

50ug

**Reactivity:**

Human

**Source:**

Rabbit

**Isotype:**

IgG

**Applications:**

ELISA, IHC, IF

**Recommended dilutions:**

ELISA:1:2000-1:10000, IHC:1:20-1:200,  
IF:1:50-1:200

**Protein Background:**

Possible role in granule neuron development.

**Gene ID:**

ABHD14A

**Uniprot**

Q9BUJ0

**Synonyms:**

Protein ABHD14A (EC 3) (Alpha/beta hydrolase domain-containing protein 14A)  
(Abhydrolase domain-containing protein 14A), ABHD14A

**Immunogen:**

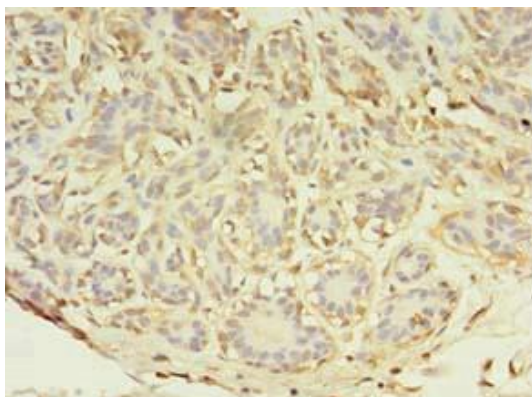
Recombinant Human Alpha/&beta; hydrolase domain-containing protein 14A protein  
(56-258AA).

**Storage:**

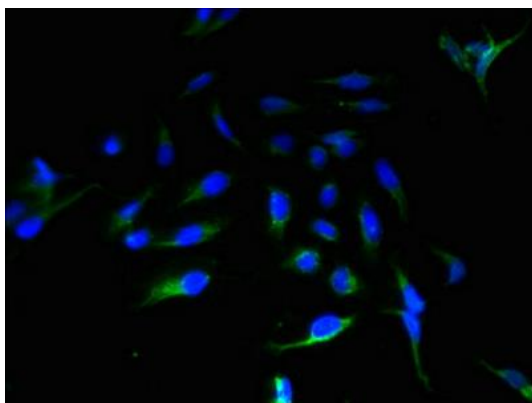
Preservative: 0.03% Proclin 300. Constituents: 50% Glycerol, 0.01M PBS, PH 7.4

## Product Images

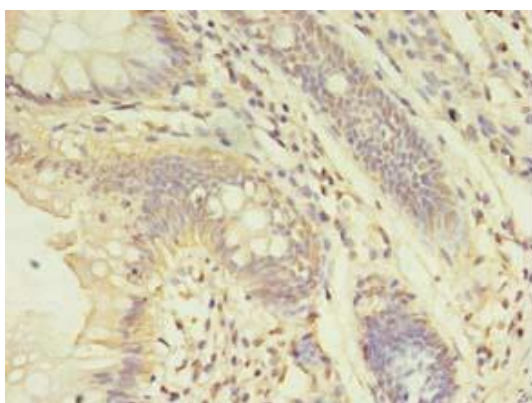
---



Immunohistochemistry of paraffin-embedded human breast cancer using PACO41250 at dilution of 1:100.



Immunofluorescent analysis of HeLa cells using PACO41250 at dilution of 1:100 and Alexa Fluor 488-conjugated AffiniPure Goat Anti-Rabbit IgG(H+L).



Immunohistochemistry of paraffin-embedded human colon cancer using PACO41250 at dilution of 1:100.