

Product Information

Size:

50ug

Reactivity:

Human

Source:

Rabbit

Isotype:

IgG

Applications:

ELISA, IHC

Recommended dilutions:

ELISA:1:2000-1:10000, IHC:1:20-1:200

Protein Background:

Dehydrogenase that mediates the formation of 2,5-dihydroxybenzoic acid, (2,5-DHBA), a siderophore that shares structural similarities with bacterial enterobactin and associates with LCN2, thereby playing a key role in iron homeostasis and transport. Also acts as a 3-hydroxybutyrate dehydrogenase.

Gene ID:

BDH2

Uniprot

Q9BUT1

Synonyms:

3-hydroxybutyrate dehydrogenase type 2 (EC 1.1.1. -) (EC 1.1.1.30) (Dehydrogenase/reductase SDR family member 6) (Oxidoreductase UCPA) (R-beta-hydroxybutyrate dehydrogenase) (Short chain dehydrogenase/reductase family 15C member 1), BDH2, DHRS6 SDR15C1

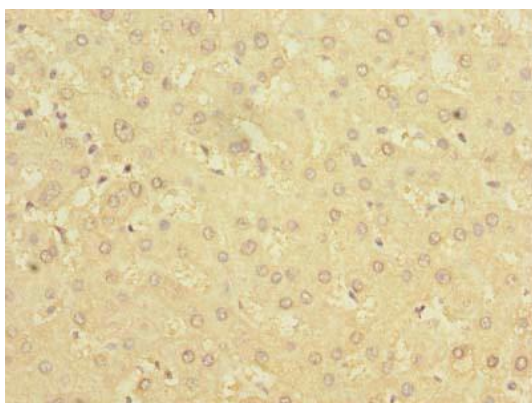
Immunogen:

Recombinant Human 3-hydroxybutyrate dehydrogenase type 2 protein (1-245AA).

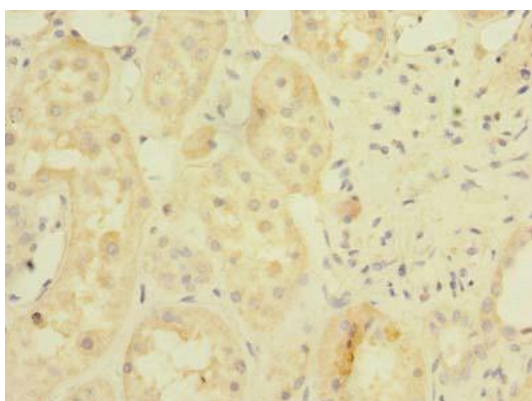
Storage:

Preservative: 0.03% Proclin 300. Constituents: 50% Glycerol, 0.01M PBS, PH 7.4

Product Images



Immunohistochemistry of paraffin-embedded human liver tissue using PACO41254 at dilution of 1:100.



Immunohistochemistry of paraffin-embedded human kidney tissue using PACO41254 at dilution of 1:100.