

C20orf27 Antibody



PACO41298

Product Information

Size:

50ug

Reactivity:

Human

Source:

Rabbit

Isotype:

IgG

Applications:

ELISA, WB, IHC

Recommended dilutions:

ELISA:1:2000-1:10000, WB:1:500-1:2000,
IHC:1:20-1:200

Protein Background:

Gene ID:

C20orf27

Uniprot

Q9GZN8

Synonyms:

UPF0687 protein C20orf27, C20orf27

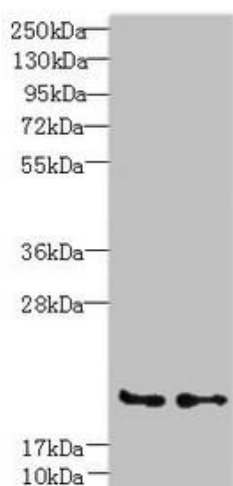
Immunogen:

Recombinant Human UPF0687 protein C20orf27 protein (3-174AA).

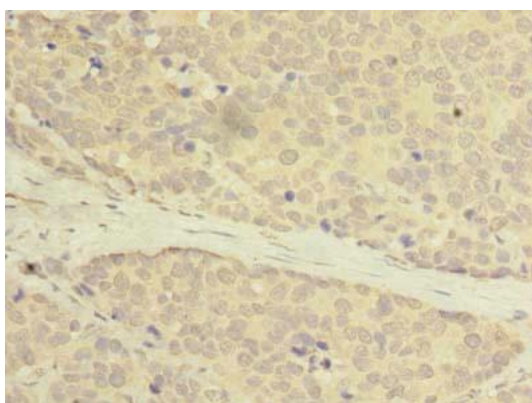
Storage:

Preservative: 0.03% Proclin 300. Constituents: 50% Glycerol, 0.01M PBS, PH 7.4

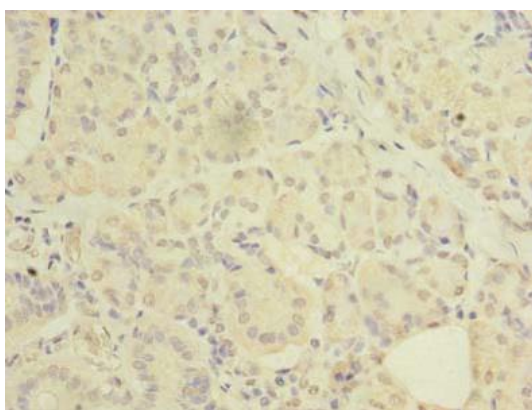
Product Images



Western blot. All lanes: C20orf27 antibody at 6 μ g/ml. Lane 1: HCT116 whole cell lysate. Lane 2: MDA-MB-231 whole cell lysate. Secondary: Goat polyclonal to rabbit IgG at 1/10000 dilution. Predicted band size: 20, 22 kDa. Observed band size: 20 kDa.



Immunohistochemistry of paraffin-embedded human gastric cancer using PACO41298 at dilution of 1: 100.



Immunohistochemistry of paraffin-embedded human pancreatic tissue using PACO41298 at dilution of 1: 100.