

# SLC25A51 Antibody



PACO41322

---

## Product Information

**Size:**

50ug

**Reactivity:**

Human, Mouse

**Source:**

Rabbit

**Isotype:**

IgG

**Applications:**

ELISA, WB, IF

**Recommended dilutions:**

ELISA:1:2000-1:10000, WB:1:1000-1:5000,  
IF:1:50-1:200

**Protein Background:****Gene ID:**

SLC25A51

**Uniprot**

Q9H1U9

**Synonyms:**

Solute carrier family 25 member 51 (Mitochondrial carrier triple repeat protein 1),  
SLC25A51, MCART1

**Immunogen:**

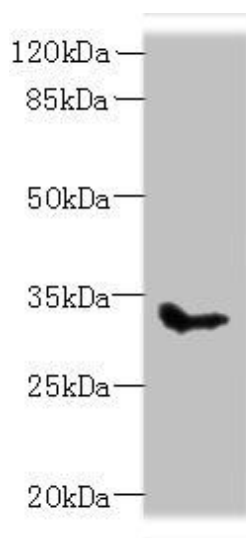
Recombinant Human Solute carrier family 25 member 51 protein (1-35AA).

**Storage:**

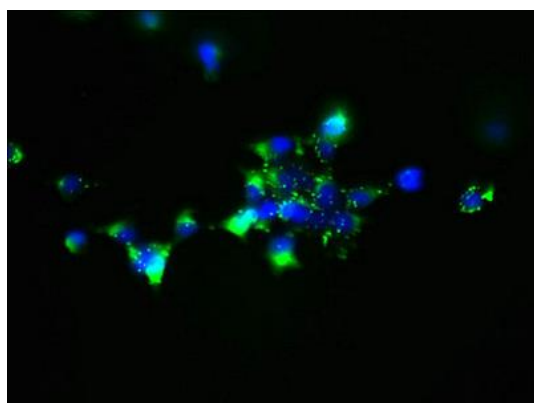
Preservative: 0.03% Proclin 300. Constituents: 50% Glycerol, 0.01M PBS, PH 7.4

## Product Images

---



Western blot. All lanes: SLC25A51 antibody at 8 $\mu$ g/ml + Mouse kidney tissue. Secondary. Goat polyclonal to rabbit IgG at 1/10000 dilution. Predicted band size: 34 kDa. Observed band size: 34 kDa.



Immunofluorescent analysis of 293 cells using PACO41322 at dilution of 1:100 and Alexa Fluor 488-conjugated AffiniPure Goat Anti-Rabbit IgG(H+L).