

# HOMER3 Antibody



PACO41414

---

## Product Information

**Size:**

50ug

**Reactivity:**

Human, Mouse

**Source:**

Rabbit

**Isotype:**

IgG

**Applications:**

ELISA, WB, IHC

**Recommended dilutions:**

ELISA:1:2000-1:10000, WB:1:500-1:5000,  
IHC:1:20-1:200

**Protein Background:**

Postsynaptic density scaffolding protein. Binds and cross-links cytoplasmic regions of GRM1, GRM5, ITPR1, DNMT3, RYR1, RYR2, SHANK1 and SHANK3. By physically linking GRM1 and GRM5 with ER-associated ITPR1 receptors, it aids the coupling of surface receptors to intracellular calcium release. Isoforms can be differently regulated and may play an important role in maintaining the plasticity at glutamatergic synapses.

**Gene ID:**

HOMER3

**Uniprot**

Q9NSC5

**Synonyms:**

Homer protein homolog 3 (Homer-3), HOMER3

**Immunogen:**

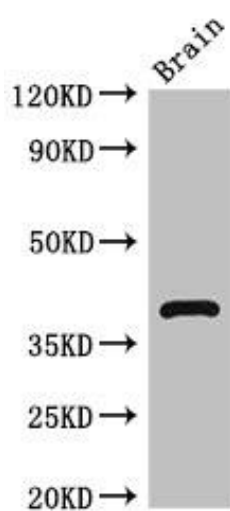
Recombinant Human Homer protein homolog 3 protein (151-361AA).

**Storage:**

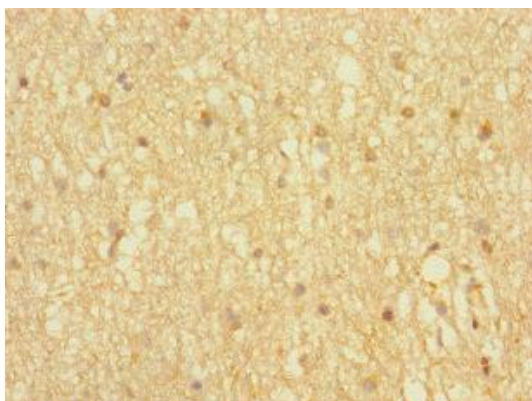
Preservative: 0.03% Proclin 300. Constituents: 50% Glycerol, 0.01M PBS, PH 7.4

## Product Images

---



Western Blot. Positive WB detected in: Mouse brain tissue. All lanes: HOMER3 antibody at 2.7 $\mu$ g/ml. Secondary. Goat polyclonal to rabbit IgG at 1/50000 dilution. Predicted band size: 40, 17, 14, 36 kDa. Observed band size: 40 kDa.



Immunohistochemistry of paraffin-embedded human brain tissue using PACO41414 at dilution of 1:100.