

RAB20 Antibody



PACO41454

Product Information

Size:

50ug

Reactivity:

Human

Source:

Rabbit

Isotype:

IgG

Applications:

ELISA, WB, IHC

Recommended dilutions:

ELISA:1:2000-1:10000, WB:1:1000-1:5000,
IHC:1:20-1:200

Protein Background:

Plays a role in apical endocytosis/recycling. Plays a role in the maturation and acidification of phagosomes that engulf pathogens, such as S.aureus and M. tuberculosis. Plays a role in the fusion of phagosomes with lysosomes.

Gene ID:

RAB20

Uniprot

Q9NX57

Synonyms:

Ras-related protein Rab-20, RAB20

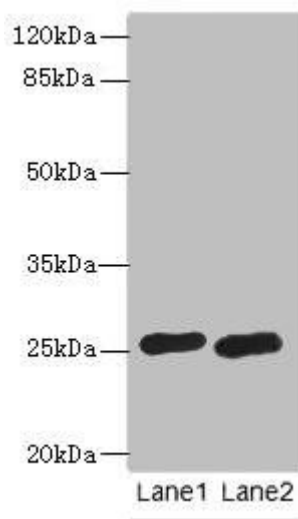
Immunogen:

Recombinant Human Ras-related protein Rab-20 protein (1-234AA).

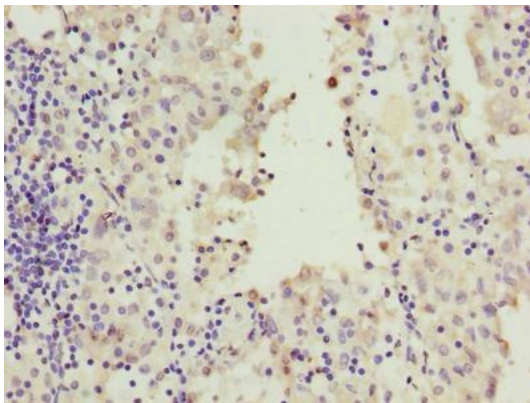
Storage:

Preservative: 0.03% Proclin 300. Constituents: 50% Glycerol, 0.01M PBS, PH 7.4

Product Images



Western blot. All lanes: RAB20 antibody at 0.6 μ g/ml. Lane 1: HL60 whole cell lysate. Lane 2: U937 whole cell lysate. Secondary. Goat polyclonal to rabbit IgG at 1/10000 dilution. Predicted band size: 26 kDa. Observed band size: 26 kDa.



Immunohistochemistry of paraffin-embedded human lung cancer using PACO41454 at dilution of 1:100.