

SPANXC Antibody



PACO41478

Product Information

Size:

50ug

Reactivity:

Human

Source:

Rabbit

Isotype:

IgG

Applications:

ELISA, IHC

Recommended dilutions:

ELISA:1:2000-1:10000, IHC:1:20-1:200

Protein Background:

nucleus.

Gene ID:

SPANXC

Uniprot

Q9NY87

Synonyms:

Sperm protein associated with the nucleus on the X chromosome C (Cancer/testis antigen 11.3) (CT11.3) (Cancer/testis-associated protein CTp11) (Nuclear-associated protein SPAN-Xc) (SPANX-C) (SPANX family member C), SPANXC

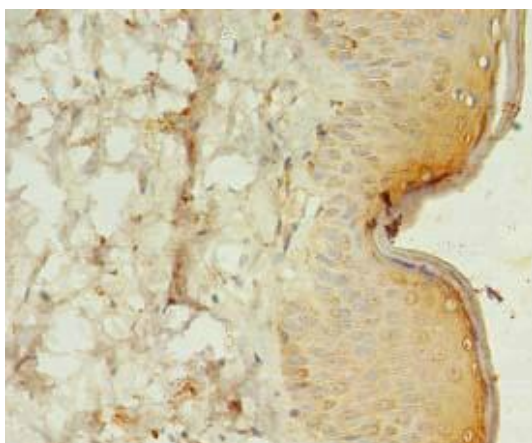
Immunogen:

Recombinant Human Sperm protein associated with the nucleus on the X chromosome C protein (1-97AA).

Storage:

Preservative: 0.03% Proclin 300. Constituents: 50% Glycerol, 0.01M PBS, PH 7.4

Product Images



Immunohistochemistry of paraffin-embedded human skin tissue using PACO41478 at dilution of 1:100.