

MAP10 Antibody



PACO41498

Product Information

Size:

50ug

Reactivity:

Human, Mouse

Source:

Rabbit

Isotype:

IgG

Applications:

ELISA, WB, IHC, IF

Recommended dilutions:

ELISA:1:2000-1:10000, WB:1:2000-1:5000,
IHC:1:20-1:200, IF:1:50-1:200

Protein Background:

Microtubule-associated protein (MAP) that plays a role in the regulation of cell division; promotes microtubule stability and participates in the organization of the spindle midzone and normal progress of cytokinesis.

Gene ID:

MAP10

Uniprot

Q9P2G4

Synonyms:

Microtubule-associated protein 10 (Microtubule regulator of 120 KDa), MAP10, KIAA1383 MTR120

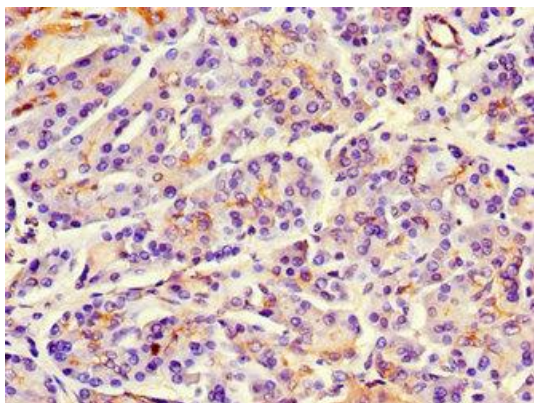
Immunogen:

Recombinant Human Microtubule-associated protein 10 protein (401-600AA).

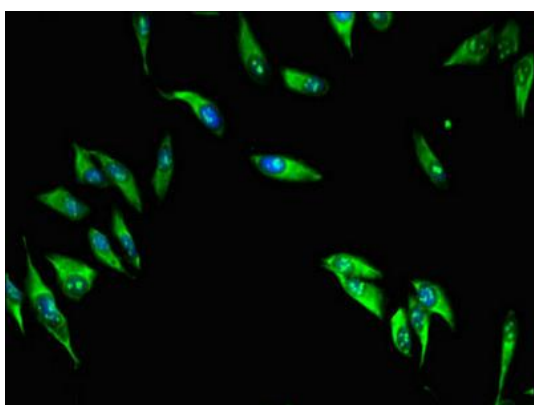
Storage:

Preservative: 0.03% Proclin 300. Constituents: 50% Glycerol, 0.01M PBS, PH 7.4

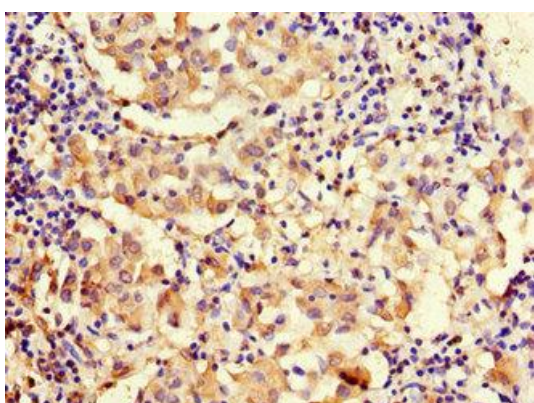
Product Images



Immunohistochemistry of paraffin-embedded human pancreatic tissue using PACO41498 at dilution of 1:100.



Immunofluorescent analysis of HeLa cells using PACO41498 at dilution of 1:100 and Alexa Fluor 488-conjugated AffiniPure Goat Anti-Rabbit IgG(H+L).



Immunohistochemistry of paraffin-embedded human lung cancer using PACO41498 at dilution of 1:100.