

MSTO1 Antibody



PACO41534

Product Information

Size:

50ug

Reactivity:

Human

Source:

Rabbit

Isotype:

IgG

Applications:

ELISA, IHC

Recommended dilutions:

ELISA:1:2000-1:10000, IHC:1:20-1:200

Protein Background:

Involved in the regulation of mitochondrial distribution and morphology.

Gene ID:

MSTO1

Uniprot

Q9BUK6

Synonyms:

Protein misato homolog 1, MSTO1

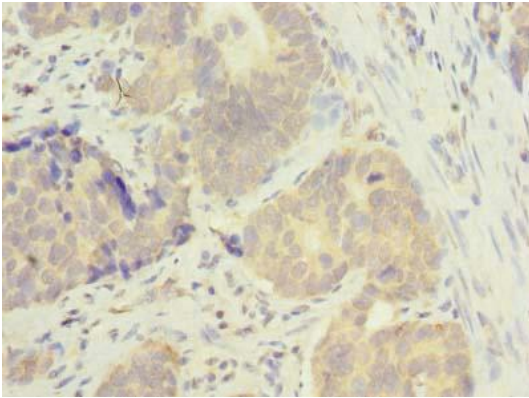
Immunogen:

Recombinant Human Protein misato homolog 1 protein (1-280AA).

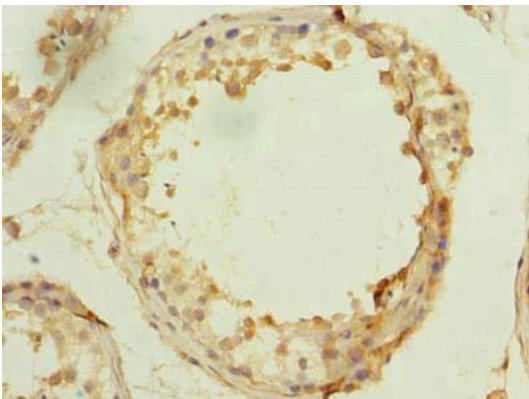
Storage:

Preservative: 0.03% Proclin 300. Constituents: 50% Glycerol, 0.01M PBS, PH 7.4

Product Images



Immunohistochemistry of paraffin-embedded human gastric cancer using PACO41534 at dilution of 1:100.



Immunohistochemistry of paraffin-embedded human testis tissue using PACO41534 at dilution of 1:100.