

# SLC25A18 Antibody



PACO41598

---

## Product Information

**Size:**

50ug

**Reactivity:**

Human

**Source:**

Rabbit

**Isotype:**

IgG

**Applications:**

ELISA, WB, IHC, IF

**Recommended dilutions:**

ELISA:1:2000-1:10000, WB:1:500-1:2000,  
IHC:1:20-1:200, IF:1:50-1:200

**Protein Background:**

Involved in the transport of glutamate across the inner mitochondrial membrane. Glutamate is cotransported with H(+).

**Gene ID:**

SLC25A18

**Uniprot**

Q9H1K4

**Synonyms:**

Mitochondrial glutamate carrier 2 (GC-2) (Glutamate/H(+) symporter 2) (Solute carrier family 25 member 18), SLC25A18, GC2

**Immunogen:**

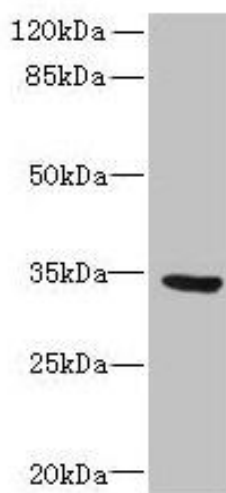
Recombinant Human Mitochondrial glutamate carrier 2 protein (246-287AA).

**Storage:**

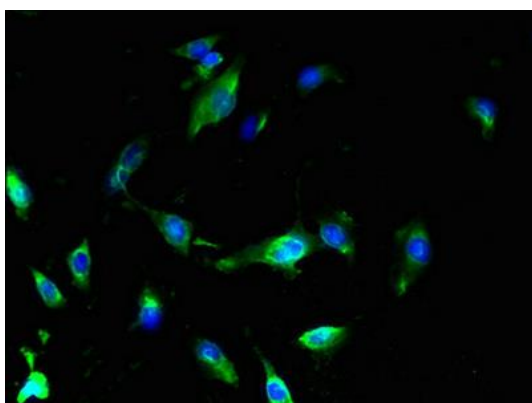
Preservative: 0.03% Proclin 300. Constituents: 50% Glycerol, 0.01M PBS, PH 7.4

## Product Images

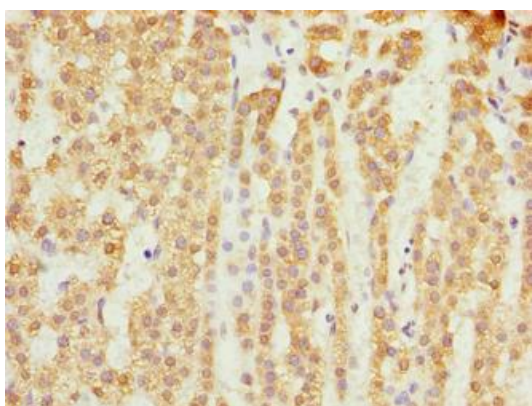
---



Western blot. All lanes: SLC25A18 antibody at 0.3 $\mu$ g/ml + U87 whole cell lysate. Secondary. Goat polyclonal to rabbit IgG at 1/10000 dilution. Predicted band size: 34 kDa. Observed band size: 34 kDa.



Immunofluorescent analysis of U251 cells using PACO41598 at dilution of 1:100 and Alexa Fluor 488-conjugated AffiniPure Goat Anti-Rabbit IgG(H+L).



Immunohistochemistry of paraffin-embedded human adrenal gland tissue using PACO41598 at dilution of 1:100.