

SH3BGRL3 Antibody



PACO41602

Product Information

Size:

50ug

Reactivity:

Human

Source:

Rabbit

Isotype:

IgG

Applications:

ELISA, WB, IHC

Recommended dilutions:

ELISA:1:2000-1:10000, WB:1:1000-1:5000,
IHC:1:20-1:200

Protein Background:

Could act as a modulator of glutaredoxin biological activity.

Gene ID:

SH3BGRL3

Uniprot

Q9H299

Synonyms:

SH3 domain-binding glutamic acid, rich-like protein 3 (SH3 domain-binding protein 1) (SH3BP-1), SH3BGRL3

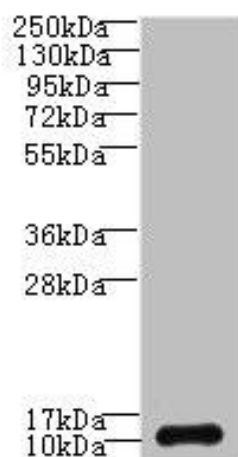
Immunogen:

Recombinant Human SH3 domain-binding glutamic acid, rich-like protein 3 protein (2-93AA).

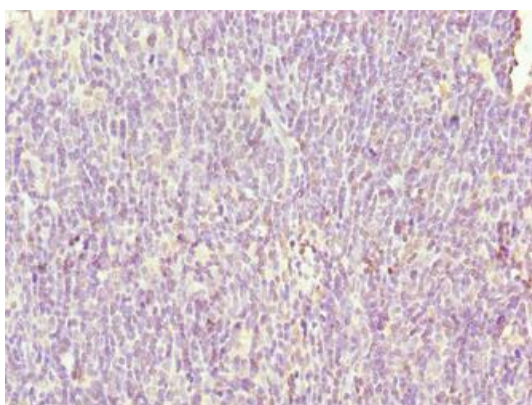
Storage:

Preservative: 0.03% Proclin 300. Constituents: 50% Glycerol, 0.01M PBS, PH 7.4

Product Images



Western blot. All lanes: SH3BGRL3 antibody at 0.05 μ g/ml + U87 whole cell lysate. Secondary. Goat polyclonal to rabbit IgG at 1/10000 dilution. Predicted band size: 11 kDa. Observed band size: 11 kDa.



Immunohistochemistry of paraffin-embedded human thymus tissue using PACO41602 at dilution of 1:100.



Immunohistochemistry of paraffin-embedded human skeletal muscle tissue using PACO41602 at dilution of 1:100.