

# MAP1LC3A Antibody



PACO41622

---

## Product Information

**Size:**

50ug

**Reactivity:**

Human

**Source:**

Rabbit

**Isotype:**

IgG

**Applications:**

ELISA, IHC

**Recommended dilutions:**

ELISA:1:2000-1:10000, IHC:1:20-1:200

**Protein Background:**

Ubiquitin-like modifier involved in formation of autophagosomal vacuoles (autophagosomes). Whereas LC3s are involved in elongation of the phagophore membrane, the GABARAP/GATE-16 subfamily is essential for a later stage in autophagosome maturation.

**Gene ID:**

MAP1LC3A

**Uniprot**

Q9H492

**Synonyms:**

Microtubule-associated proteins 1A/1B light chain 3A (Autophagy-related protein LC3 A) (Autophagy-related ubiquitin-like modifier LC3 A) (MAP1 light chain 3-like protein 1) (MAP1A/MAP1B light chain 3 A) (MAP1A/MAP1B LC3 A) (Microtubule-associated protein 1 light chain 3 alpha), MAP1LC3A

**Immunogen:**

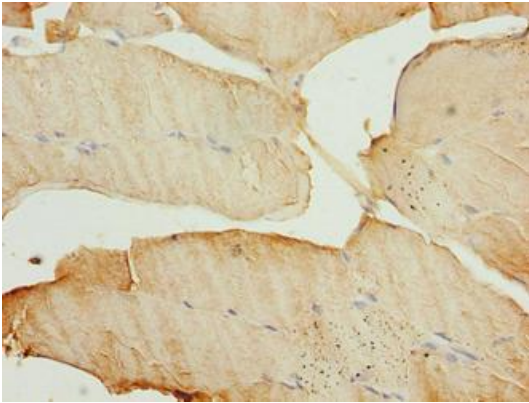
Recombinant Human Microtubule-associated proteins 1A/1B light chain 3A protein (1-120AA).

**Storage:**

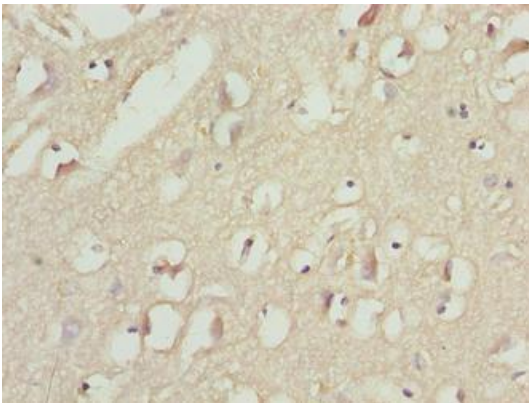
Preservative: 0.03% Proclin 300. Constituents: 50% Glycerol, 0.01M PBS, PH 7.4

## Product Images

---



Immunohistochemistry of paraffin-embedded human skeletal muscle tissue using PACO41622 at dilution of 1:100.



Immunohistochemistry of paraffin-embedded human brain tissue using PACO41622 at dilution of 1:100.