

PACO41626

---

## Product Information

**Size:**

50ug

**Reactivity:**

Human

**Source:**

Rabbit

**Isotype:**

IgG

**Applications:**

ELISA, IHC

**Recommended dilutions:**

ELISA:1:2000-1:10000, IHC:1:500-1:1000

**Protein Background:**

extracellular exosome, Golgi membrane, protein homodimerization activity, positive regulation of epithelial cell migration, positive regulation of epithelial to mesenchymal transition, positive regulation of ERK1 and ERK2 cascade.

**Gene ID:**

GLIPR2

**Uniprot**

Q9H4G4

**Synonyms:**

Golgi-associated plant pathogenesis-related protein 1 (GAPR-1) (Golgi-associated PR-1 protein) (Glioma pathogenesis-related protein 2) (GliPR 2), GLIPR2, C9orf19 GAPR1

**Immunogen:**

Recombinant Human Golgi-associated plant pathogenesis-related protein 1 protein (2-85AA).

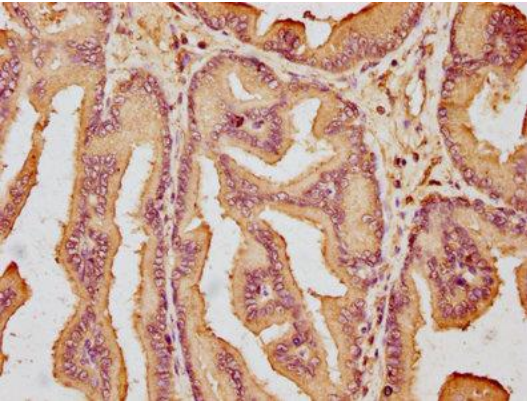
**Storage:**

Preservative: 0.03% Proclin 300. Constituents: 50% Glycerol, 0.01M PBS, PH 7.4

## Product Images

---

N/A



N/A

IHC image of PACO41626 diluted at 1:600 and staining in paraffin-embedded human prostate tissue performed on a Leica Bond™ system. After dewaxing and hydration, antigen retrieval was mediated by high pressure in a citrate buffer (pH 6.0). Section was blocked with 10% normal goat serum 30min at RT. Then primary antibody (1% BSA) was incubated at 4°C overnight. The primary is detected by a biotinylated secondary antibody and visualized using an HRP conjugated SP system.