

Product Information

Size:

50ug

Reactivity:

Human

Source:

Rabbit

Isotype:

IgG

Applications:

ELISA, WB

Recommended dilutions:

ELISA:1:2000-1:10000, WB:1:1000-1:5000

Protein Background:

mitochondrial inner membrane, mitochondrial small ribosomal subunit, structural constituent of ribosome, mitochondrial translation, mitochondrial translational elongation, mitochondrial translational initiation, mitochondrial translational termination, organelle organization, translation.

Gene ID:

MRPS18A

Uniprot

Q9NVS2

Synonyms:

39S ribosomal protein S18a, mitochondrial (MRP-S18-a) (Mrps18a) (S18mt-a) (39S ribosomal protein S18-3, mitochondrial) (MRP-S18-3) (Mitochondrial large ribosomal subunit protein bS18a) (Mitochondrial large ribosomal subunit protein mL66), MRPS18A

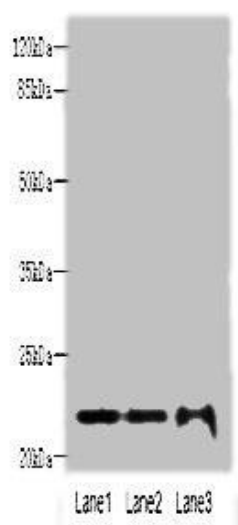
Immunogen:

Recombinant Human 39S ribosomal protein S18a, mitochondrial protein (1-196AA).

Storage:

Preservative: 0.03% Proclin 300. Constituents: 50% Glycerol, 0.01M PBS, PH 7.4

Product Images



Western blot. All lanes: MRPS18A antibody at 6 μ g/ml. Lane 1: HL60 whole cell lysate. Lane 2: A549 whole cell lysate. Lane 3: HepG2 whole cell lysate. Secondary. Goat polyclonal to rabbit IgG at 1/10000 dilution. Predicted band size: 23, 31, 15 kDa. Observed band size: 23 kDa.