

# KBTBD4 Antibody



PACO41710

---

## Product Information

**Size:**

50ug

**Reactivity:**

Human, Mouse

**Source:**

Rabbit

**Isotype:**

IgG

**Applications:**

ELISA, WB, IHC

**Recommended dilutions:**

ELISA:1:2000-1:10000, WB:1:500-1:2000,  
IHC:1:20-1:200

**Protein Background:**

**Gene ID:**

KBTBD4

**Uniprot**

Q9NVX7

**Synonyms:**

Kelch repeat and BTB domain-containing protein 4 (BTB and kelch domain-containing protein 4), KBTBD4, BKLHD4

**Immunogen:**

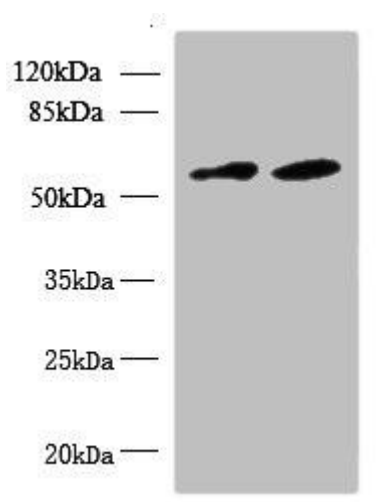
Recombinant Human Kelch repeat and BTB domain-containing protein 4 protein (151-415AA).

**Storage:**

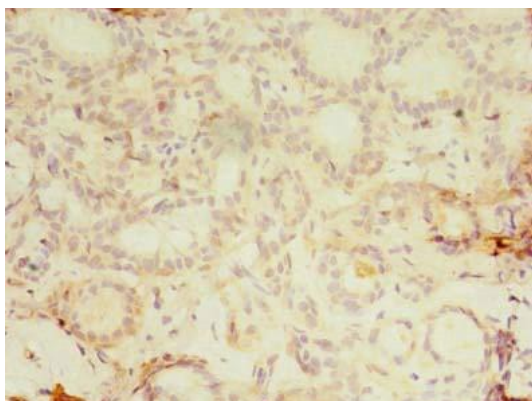
Preservative: 0.03% Proclin 300. Constituents: 50% Glycerol, 0.01M PBS, PH 7.4

## Product Images

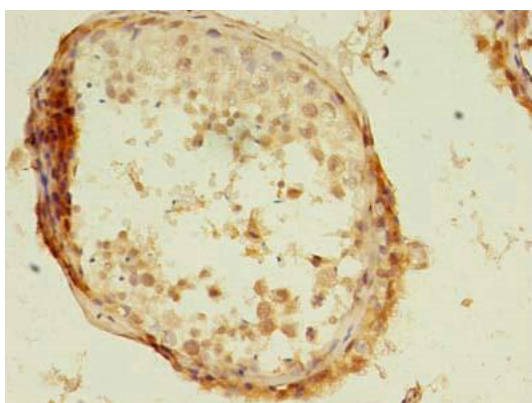
---



Western blot. All lanes: KBTBD4 antibody at 10 $\mu$ g/ml. Lane 1: U87 whole cell lysate. Lane 2: NIH/3T3 whole cell lysate. Secondary. Goat polyclonal to rabbit IgG at 1/10000 dilution. Predicted band size: 59, 60 kDa. Observed band size: 59 kDa.



Immunohistochemistry of paraffin-embedded human breast cancer using PACO41710 at dilution of 1:100.



Immunohistochemistry of paraffin-embedded human testis tissue using PACO41710 at dilution of 1:100.