

# MRPL16 Antibody



PACO41722

---

## Product Information

**Size:**

50ug

**Reactivity:**

Human

**Source:**

Rabbit

**Isotype:**

IgG

**Applications:**

ELISA, IHC, IF

**Recommended dilutions:**

ELISA:1:2000-1:10000, IHC:1:50-1:200,  
IF:1:50-1:500

**Protein Background:**

Component of the large subunit of mitochondrial ribosome.

**Gene ID:**

MRPL16

**Uniprot**

Q9NX20

**Synonyms:**

39S ribosomal protein L16, mitochondrial (L16mt) (MRP-L16) (Mitochondrial large ribosomal subunit protein uL16m), MRPL16

**Immunogen:**

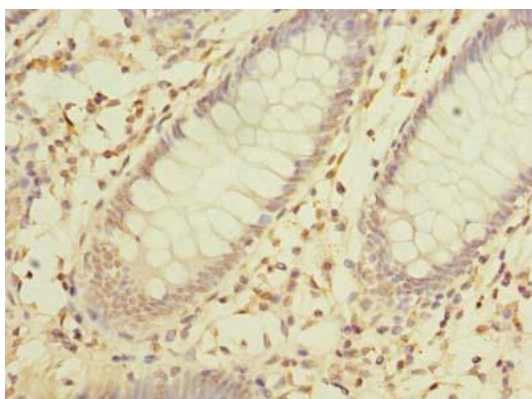
Recombinant Human 39S ribosomal protein L16, mitochondrial protein (37-251AA).

**Storage:**

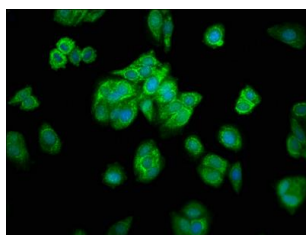
Preservative: 0.03% Proclin 300. Constituents: 50% Glycerol, 0.01M PBS, PH 7.4

## Product Images

---



Immunohistochemistry of paraffin-embedded human colon cancer using PACO41722 at dilution of 1:100.



Immunofluorescence staining of HepG2 cells with PACO41722 at 1:200, counter-stained with DAPI. The cells were fixed in 4% formaldehyde, permeabilized using 0.2% Triton X-100 and blocked in 10% normal Goat Serum. The cells were then incubated with the antibody overnight at 4°C. The secondary antibody was Alexa Fluor 488-conjugated AffiniPure Goat Anti-Rabbit IgG(H+L).