

SIPA1L2 Antibody



PACO41766

Product Information

Size:

50ug

Reactivity:

Human

Source:

Rabbit

Isotype:

IgG

Applications:

ELISA, IHC

Recommended dilutions:

ELISA:1:2000-1:10000, IHC:1:20-1:200

Protein Background:

Gene ID:

SIPA1L2

Uniprot

Q9P2F8

Synonyms:

Signal-induced proliferation-associated 1-like protein 2 (SIPA1-like protein 2), SIPA1L2, KIAA1389

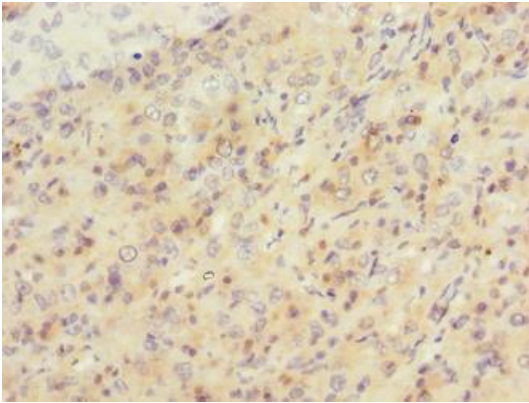
Immunogen:

Recombinant Human Signal-induced proliferation-associated 1-like protein 2 protein (522-778AA).

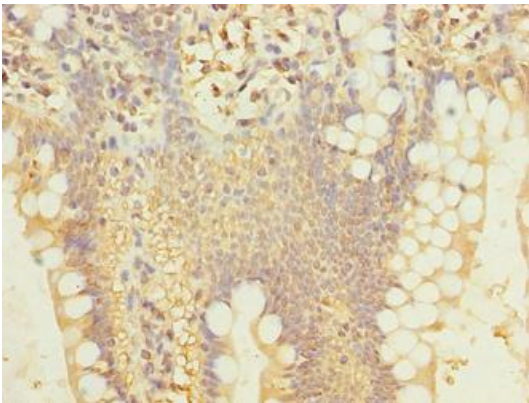
Storage:

Preservative: 0.03% Proclin 300. Constituents: 50% Glycerol, 0.01M PBS, PH 7.4

Product Images



Immunohistochemistry of paraffin-embedded human liver cancer using PACO41766 at dilution of 1:100.



Immunohistochemistry of paraffin-embedded human small intestine tissue using PACO41766 at dilution of 1:100.