

# RWDD2A Antibody



PACO41810

---

## Product Information

**Size:**

50ug

**Reactivity:**

Human, Mouse

**Source:**

Rabbit

**Isotype:**

IgG

**Applications:**

ELISA, WB, IHC

**Recommended dilutions:**

ELISA:1:2000-1:10000, WB:1:500-1:2000,  
IHC:1:20-1:200

**Protein Background:**

**Gene ID:**

RWDD2A

**Uniprot**

Q9UIY3

**Synonyms:**

RWD domain-containing protein 2A, RWDD2A, RWDD2

**Immunogen:**

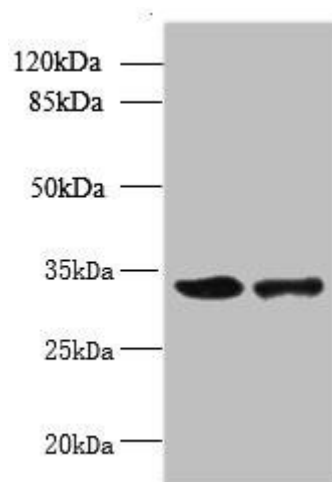
Recombinant Human RWD domain-containing protein 2A protein (1-292AA).

**Storage:**

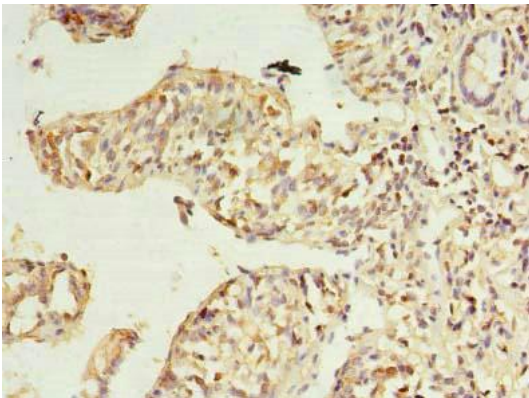
Preservative: 0.03% Proclin 300. Constituents: 50% Glycerol, 0.01M PBS, PH 7.4

## Product Images

---



Western blot. All lanes: RWDD2A antibody at 0.2 $\mu$ g/ml. Lane 1: Mouse thymus tissue. Lane 2: A549 whole cell lysate. Secondary. Goat polyclonal to rabbit IgG at 1/10000 dilution. Predicted band size: 34, 28 kDa. Observed band size: 34 kDa.



Immunohistochemistry of paraffin-embedded human small intestine tissue using PACO41810 at dilution of 1:100.