

# C3orf14 Antibody



PACO41950

---

## Product Information

**Size:**

50ug

**Reactivity:**

Human, Mouse, Rat

**Source:**

Rabbit

**Isotype:**

IgG

**Applications:**

ELISA, WB, IHC

**Recommended dilutions:**

ELISA:1:2000-1:10000, WB:1:500-1:5000,  
IHC:1:20-1:200

**Protein Background:**

**Gene ID:**

C3orf14

**Uniprot**

Q9HBI5

**Synonyms:**

Uncharacterized protein C3orf14, C3orf14

**Immunogen:**

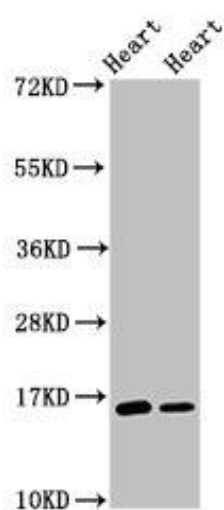
Recombinant Human Uncharacterized protein C3orf14 protein (9-128AA).

**Storage:**

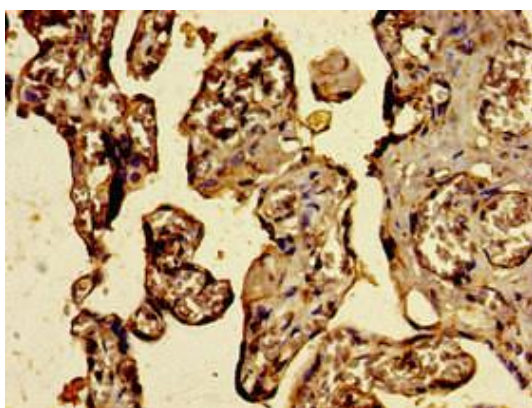
Preservative: 0.03% Proclin 300. Constituents: 50% Glycerol, 0.01M PBS, PH 7.4

## Product Images

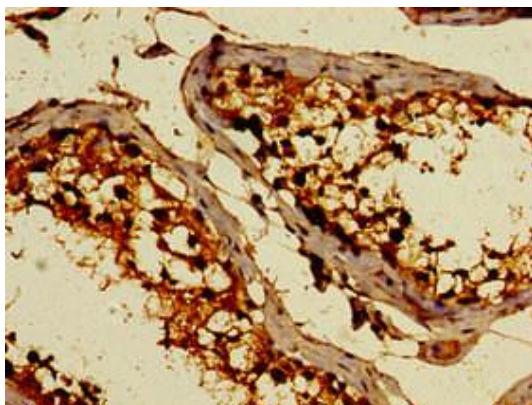
---



Western Blot. Positive WB detected in: Rat heart tissue, Mouse heart tissue. All lanes: C3orf14 antibody at 2.7 $\mu$ g/ml. Secondary. Goat polyclonal to rabbit IgG at 1/50000 dilution. Predicted band size: 16 kDa. Observed band size: 16 kDa.



Immunohistochemistry of paraffin-embedded human placenta tissue using PACO41950 at dilution of 1:100.



Immunohistochemistry of paraffin-embedded human testis tissue using PACO41950 at dilution of 1:100.