

# LRTM1 Antibody



PACO41954

---

## Product Information

**Size:**

50ug

**Reactivity:**

Human

**Source:**

Rabbit

**Isotype:**

IgG

**Applications:**

ELISA, WB, IHC, IF

**Recommended dilutions:**

ELISA:1:2000-1:10000, WB:1:1000-1:5000,  
IHC:1:20-1:200, IF:1:10-1:100

**Protein Background:**

**Gene ID:**

LRTM1

**Uniprot**

Q9HBL6

**Synonyms:**

Leucine-rich repeat and transmembrane domain-containing protein 1, LRTM1

**Immunogen:**

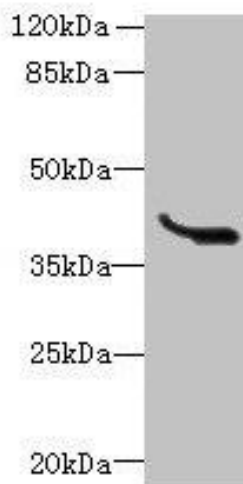
Recombinant Human Leucine-rich repeat and transmembrane domain-containing protein 1 protein (1-212AA).

**Storage:**

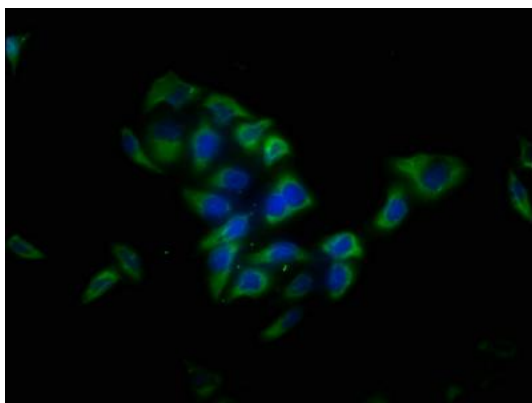
Preservative: 0.03% Proclin 300. Constituents: 50% Glycerol, 0.01M PBS, PH 7.4

## Product Images

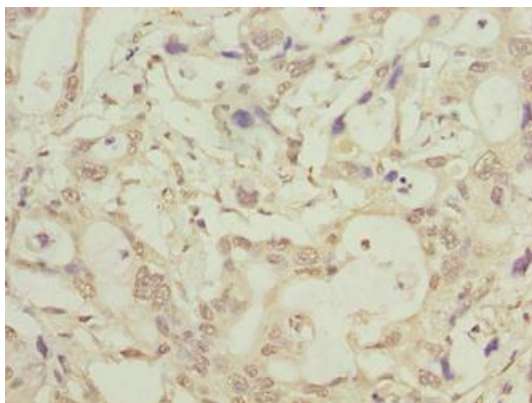
---



Western blot. All lanes: LRTM1 antibody at 0.4 $\mu$ g/ml + K562 whole cell lysate. Secondary. Goat polyclonal to rabbit IgG at 1/10000 dilution. Predicted band size: 39, 30 kDa. Observed band size: 39 kDa.



Immunofluorescence staining of HeLa cells with PACO41954 at 1:13, counter-stained with DAPI. The cells were fixed in 4% formaldehyde, permeabilized using 0.2% Triton X-100 and blocked in 10% normal Goat Serum. The cells were then incubated with the antibody overnight at 4°C. The secondary antibody was Alexa Fluor 488-conjugated AffiniPure Goat Anti-Rabbit IgG(H+L).



Immunohistochemistry of paraffin-embedded human pancreatic cancer using PACO41954 at dilution of 1:100.