

Product Information

Size:

50ug

Reactivity:

Human

Source:

Rabbit

Isotype:

IgG

Applications:

ELISA, WB, IHC

Recommended dilutions:

ELISA:1:2000-1:10000, WB:1:500-1:2000,
IHC:1:20-1:200

Protein Background:

Atypical Ras-like protein that acts as a potent regulator of NF-kappa-B activity by preventing the degradation of NF-kappa-B inhibitor beta (NFKBIB) by most signals, explaining why NFKBIB is more resistant to degradation. May act by blocking phosphorylation of NFKBIB and mediating cytoplasmic retention of p65/RELA NF-kappa-B subunit. It is unclear whether it acts as a GTPase. Both GTP- and GDP-bound forms block phosphorylation of NFKBIB.

Gene ID:

NKIRAS1

Uniprot

Q9NYS0

Synonyms:

NF-kappa-B inhibitor-interacting Ras-like protein 1 (I-kappa-B-interacting Ras-like protein 1) (κ B-Ras protein 1) (KappaB-Ras1), NKIRAS1, KBRAS1

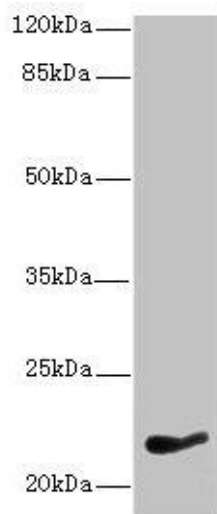
Immunogen:

Recombinant Human NF-kappa-B inhibitor-interacting Ras-like protein 1 protein (1-192AA).

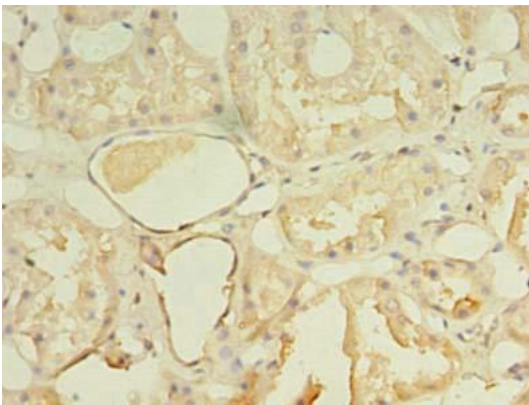
Storage:

Preservative: 0.03% Proclin 300. Constituents: 50% Glycerol, 0.01M PBS, PH 7.4

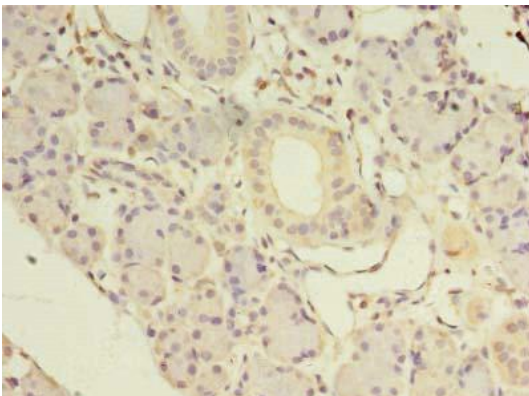
Product Images



Western blot. All lanes: NKIRAS1 antibody at 7 μ g/ml + HepG2 whole cell lysate. Secondary. Goat polyclonal to rabbit IgG at 1/10000 dilution. Predicted band size: 22 kDa. Observed band size: 22 kDa.



Immunohistochemistry of paraffin-embedded human kidney tissue using PACO41998 at dilution of 1:100.



Immunohistochemistry of paraffin-embedded human pancreatic tissue using PACO41998 at dilution of 1:100.