

KLHL42 Antibody



PACO42026

Product Information

Size:

50ug

Reactivity:

Human

Source:

Rabbit

Isotype:

IgG

Applications:

ELISA, IHC, IF

Recommended dilutions:

ELISA:1:2000-1:10000, IHC:1:20-1:200,
IF:1:50-1:200

Protein Background:

Substrate-specific adapter of a BCR (BTB-CUL3-RBX1) E3 ubiquitin-protein ligase complex required for mitotic progression and cytokinesis. The BCR(KLHL42) E3 ubiquitin ligase complex mediates the ubiquitination and subsequent degradation of KATNA1. Involved in microtubule dynamics throughout mitosis.

Gene ID:

KLHL42

Uniprot

Q9P2K6

Synonyms:

Kelch-like protein 42 (Cullin-3-binding protein 9) (Ctb9) (Kelch domain-containing protein 5), KLHL42, KIAA1340 KLHDC5

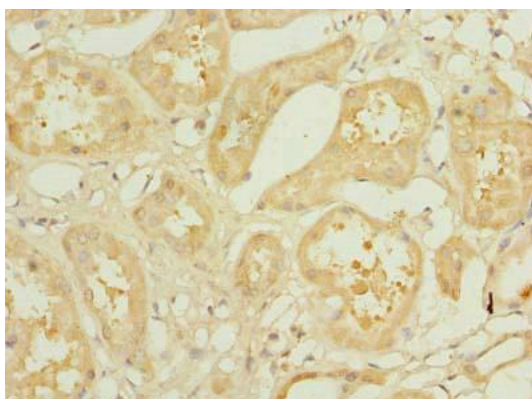
Immunogen:

Recombinant Human Kelch-like protein 42 protein (1-410AA).

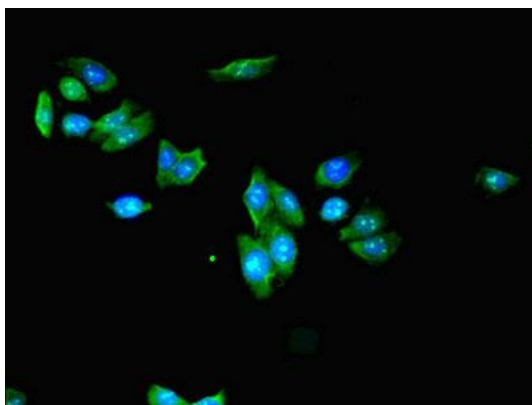
Storage:

Preservative: 0.03% Proclin 300. Constituents: 50% Glycerol, 0.01M PBS, PH 7.4

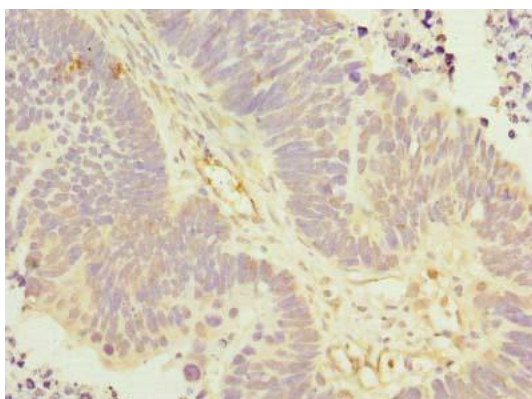
Product Images



Immunohistochemistry of paraffin-embedded human kidney tissue using PACO42026 at dilution of 1:100.



Immunofluorescent analysis of HepG2 cells using PACO42026 at dilution of 1:100 and Alexa Fluor 488-conjugated AffiniPure Goat Anti-Rabbit IgG(H+L).



Immunohistochemistry of paraffin-embedded human ovarian cancer using PACO42026 at dilution of 1:100.