

# SEC14L3 Antibody



PACO42038

---

## Product Information

**Size:**

50ug

**Reactivity:**

Human, Mouse

**Source:**

Rabbit

**Isotype:**

IgG

**Applications:**

ELISA, WB, IHC

**Recommended dilutions:**

ELISA:1:2000-1:10000, WB:1:500-1:5000,  
IHC:1:20-1:200

**Protein Background:**

Probable hydrophobic ligand-binding protein; may play a role in the transport of hydrophobic ligands like tocopherol, squalene and phospholipids.

**Gene ID:**

SEC14L3

**Uniprot**

Q9UDX4

**Synonyms:**

SEC14-like protein 3 (Tocopherol-associated protein 2), SEC14L3, TAP2

**Immunogen:**

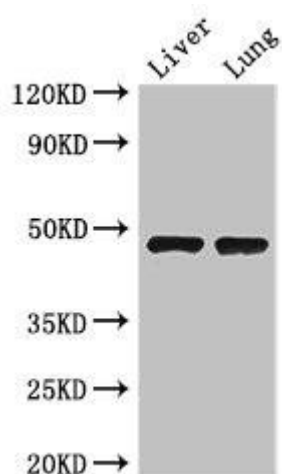
Recombinant Human SEC14-like protein 3 protein (201-400AA).

**Storage:**

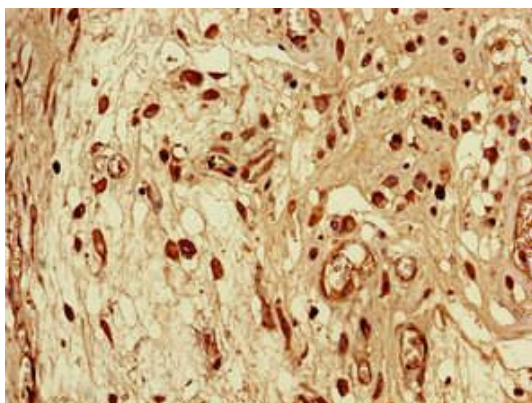
Preservative: 0.03% Proclin 300. Constituents: 50% Glycerol, 0.01M PBS, PH 7.4

## Product Images

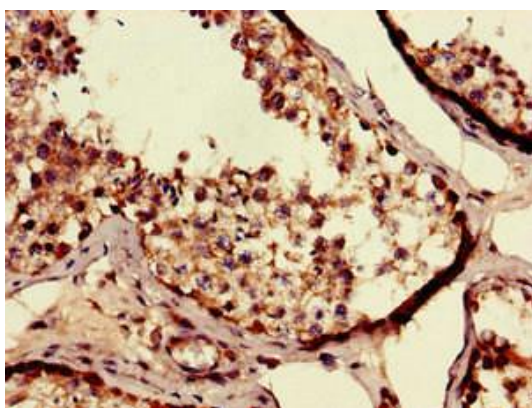
---



Western Blot. Positive WB detected in: Mouse liver tissue, Mouse lung tissue. All lanes: SEC14L3 antibody at 3 $\mu$ g/ml. Secondary. Goat polyclonal to rabbit IgG at 1/50000 dilution. Predicted band size: 47 kDa. Observed band size: 47 kDa.



Immunohistochemistry of paraffin-embedded human lung cancer using PACO42038 at dilution of 1:100.



Immunohistochemistry of paraffin-embedded human testis tissue using PACO42038 at dilution of 1:100.