

Product Information

Size:

50ug

Reactivity:

Human, Mouse

Source:

Rabbit

Isotype:

IgG

Applications:

ELISA, WB

Recommended dilutions:

ELISA:1:2000-1:10000, WB:1:500-1:2000

Protein Background:

Phosphatidylinositol 3,4,5-trisphosphate-dependent guanine nucleotide exchange factor (GEF) which, independently of RAS, transduces signals from tyrosine kinase receptors to RAC. It also mediates signaling of membrane ruffling. Regulates the actin cytoskeleton as an effector or adapter protein in response to agonist stimulated phosphatidylinositol (3,4)-bisphosphate production and cell protrusion.

Gene ID:

SWAP70

Uniprot

Q9UH65

Synonyms:

Switch-associated protein 70 (SWAP-70), SWAP70, KIAA0640

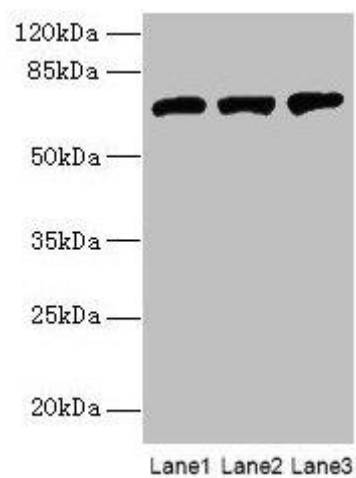
Immunogen:

Recombinant Human Switch-associated protein 70 protein (1-300AA).

Storage:

Preservative: 0.03% Proclin 300. Constituents: 50% Glycerol, 0.01M PBS, PH 7.4

Product Images



Western blot. All lanes: SWAP70 antibody at 10 μ g/ml. Lane 1: NIH/3T3 whole cell lysate. Lane 2: HepG2 whole cell lysate. Lane 3: Raji whole cell lysate. Secondary. Goat polyclonal to rabbit IgG at 1/10000 dilution. Predicted band size: 69 kDa. Observed band size: 69 kDa.