

# RSPH14 Antibody



PACO42058

---

## Product Information

**Size:**

50ug

**Reactivity:**

Human

**Source:**

Rabbit

**Isotype:**

IgG

**Applications:**

ELISA, WB, IHC

**Recommended dilutions:**

ELISA:1:2000-1:10000, WB:1:500-1:2000,  
IHC:1:20-1:200

**Protein Background:****Gene ID:**

RSPH14

**Uniprot**

Q9UHP6

**Synonyms:**

Radial spoke head 14 homolog (Rhabdoid tumor deletion region protein 1), RSPH14, RTDR1

**Immunogen:**

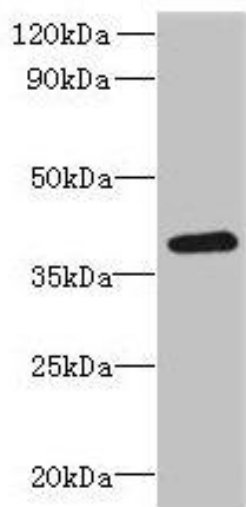
Recombinant Human Radial spoke head 14 homolog protein (1-230AA).

**Storage:**

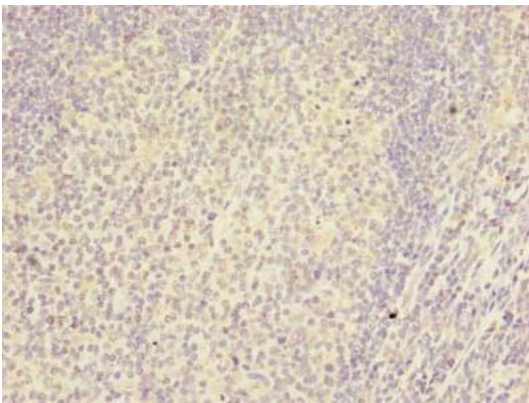
Preservative: 0.03% Proclin 300. Constituents: 50% Glycerol, 0.01M PBS, PH 7.4

## Product Images

---



Western blot. All lanes: RSPH14 antibody at 8 $\mu$ g/ml + 293T whole cell lysate. Secondary. Goat polyclonal to rabbit IgG at 1/10000 dilution. Predicted band size: 39 kDa. Observed band size: 39 kDa.



Immunohistochemistry of paraffin-embedded human tonsil tissue using PACO42058 at dilution of 1:100.