

BAIAP2L1 Antibody



PACO42066

Product Information

Size:

50ug

Reactivity:

Human

Source:

Rabbit

Isotype:

IgG

Applications:

ELISA, IHC

Recommended dilutions:

ELISA:1:2000-1:10000, IHC:1:20-1:200

Protein Background:

May function as adapter protein. Involved in the formation of clusters of actin bundles. Plays a role in the reorganization of the actin cytoskeleton in response to bacterial infection.

Gene ID:

BAIAP2L1

Uniprot

Q9UHR4

Synonyms:

Brain-specific angiogenesis inhibitor 1-associated protein 2-like protein 1 (BAI1-associated protein 2-like protein 1) (Insulin receptor tyrosine kinase substrate), BAIAP2L1, IRTKS

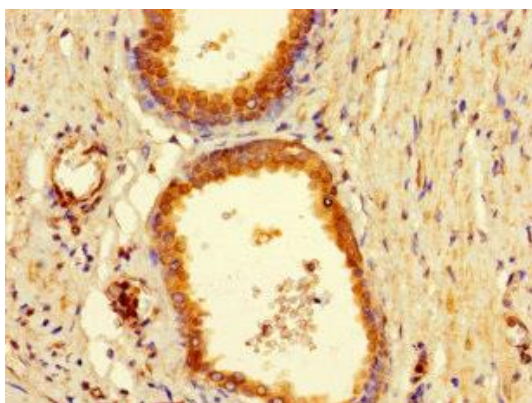
Immunogen:

Recombinant Human Brain-specific angiogenesis inhibitor 1-associated protein 2-like protein 1 protein (1-190AA).

Storage:

Preservative: 0.03% Proclin 300. Constituents: 50% Glycerol, 0.01M PBS, PH 7.4

Product Images



Immunohistochemistry of paraffin-embedded human prostate cancer using PACO42066 at dilution of 1:100.