

# RTP3 Antibody



PACO42082

---

## Product Information

**Size:**

50ug

**Reactivity:**

Human, Mouse

**Source:**

Rabbit

**Isotype:**

IgG

**Applications:**

ELISA, WB, IHC, IP

**Recommended dilutions:**

ELISA:1:2000-1:10000, WB:1:2000-1:8000,  
IHC:1:20-1:200, IP:1:200-1:2000

**Protein Background:**

cytoplasm, olfactory receptor binding, detection of chemical stimulus involved in sensory perception of bitter taste, protein insertion into membrane, protein targeting to membrane.

**Gene ID:**

RTP3

**Uniprot**

Q9BQQ7

**Synonyms:**

Receptor-transporting protein 3 (3CxxC-type zinc finger protein 3) (Transmembrane protein 7), RTP3, TMEM7 Z3CXXC3

**Immunogen:**

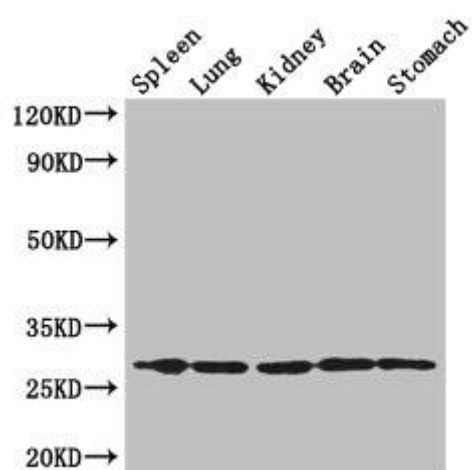
Recombinant Human Receptor-transporting protein 3 protein (1-211AA).

**Storage:**

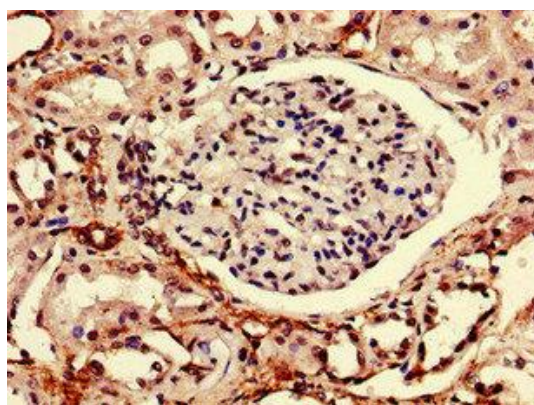
Preservative: 0.03% Proclin 300. Constituents: 50% Glycerol, 0.01M PBS, PH 7.4

## Product Images

---



Western Blot. Positive WB detected in: Mouse spleen tissue, , Mouse lung tissue, Mouse kidney tissue, Mouse brain tissue, Mouse stomach tissue. All lanes: RTP3 antibody at 3 $\mu$ g/ml. Secondary. Goat polyclonal to rabbit IgG at 1/50000 dilution. Predicted band size: 28 kDa. Observed band size: 28 kDa.



Immunohistochemistry of paraffin-embedded human kidney tissue using PACO42082 at dilution of 1:100.