
Product Information

Size:

50ug

Reactivity:

Human

Source:

Rabbit

Isotype:

IgG

Applications:

ELISA, IHC, IF

Recommended dilutions:

ELISA:1:2000-1:10000, IHC:1:20-1:200,
IF:1:50-1:200

Protein Background:

Catalyzes the first and rate-limiting reaction of the four that constitute the long-chain fatty acid, elongation cycle. This endoplasmic reticulum-bound enzymatic process, allows the addition of 2 carbons to the chain of long- and very long-chain fatty acid, /VLCFAs per cycle. Condensing enzyme that exhibits activity toward saturated C18 to C26 acyl-CoA substrates, with the highest activity towards C22:0 acyl-CoA. May participate to the production of both saturated and monounsaturated VLCFAs of different chain lengths that are involved in multiple biological processes as precursors of membrane lipids and lipid mediators. Important for saturated C24:0 and monounsaturated C24:1 sphingolipid synthesis. Indirectly inhibits RPE65 via production of VLCFAs.

Gene ID:

ELOVL1

Uniprot

Q9BW60

Synonyms:

Elongation of very long chain fatty acid, protein 1 (EC 2.3.1.199) (3-keto acyl-CoA synthase ELOVL1) (ELOVL fatty acid, elongase 1) (ELOVL FA elongase 1) (Very long chain 3-ketoacyl-CoA synthase 1) (Very long chain 3-oxoacyl-CoA synthase 1), ELOVL1, SSC1

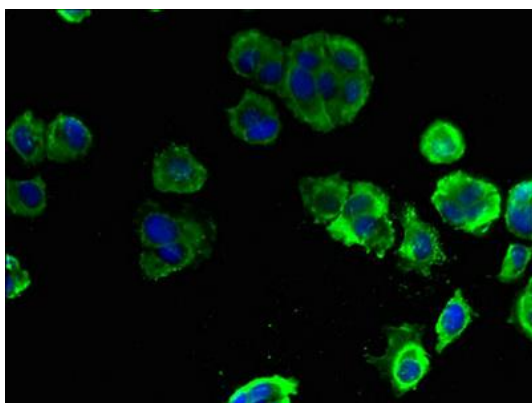
Immunogen:

Recombinant Human Elongation of very long chain fatty acid, protein 1 protein (82-175AA).

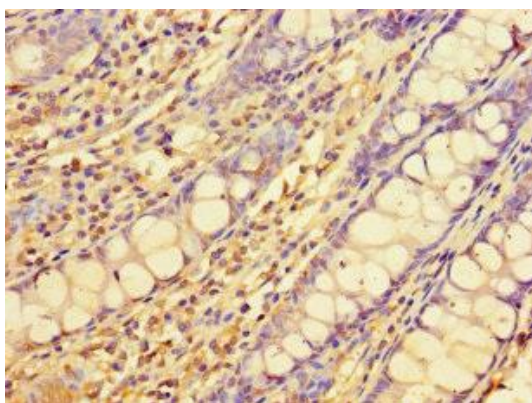
Storage:

Preservative: 0.03% Proclin 300. Constituents: 50% Glycerol, 0.01M PBS, PH 7.4

Product Images



Immunofluorescent analysis of MCF-7 cells using PACO42118 at dilution of 1:100 and Alexa Fluor 488-conjugated AffiniPure Goat Anti-Rabbit IgG(H+L).



Immunohistochemistry of paraffin-embedded human colon tissue using PACO42118 at dilution of 1:100.