

PACO42150

---

## Product Information

**Size:**

50ug

**Reactivity:**

Human

**Source:**

Rabbit

**Isotype:**

IgG

**Applications:**

ELISA, IHC

**Recommended dilutions:**

ELISA:1:2000-1:10000, IHC:1:20-1:200

**Protein Background:**

Has antibacterial activity against the Gram-negative bacteria E.coli. May play a role in sperm maturation and fertilization.

**Gene ID:**

CST11

**Uniprot**

Q9H112

**Synonyms:**

Cystatin-11, CST11, CST8L

**Immunogen:**

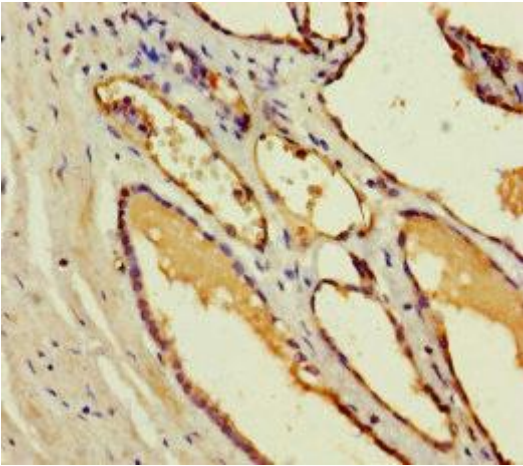
Recombinant Human Cystatin-11 protein (1-138AA).

**Storage:**

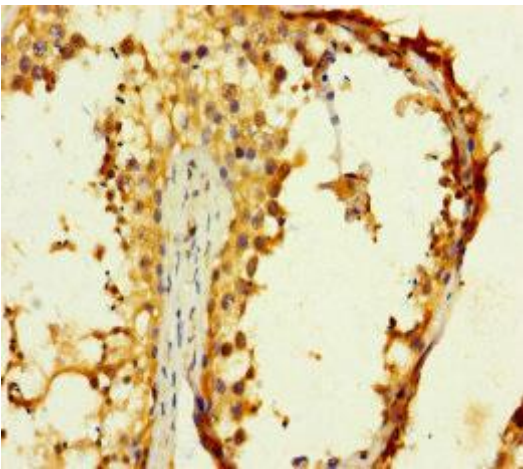
Preservative: 0.03% Proclin 300. Constituents: 50% Glycerol, 0.01M PBS, PH 7.4

## Product Images

---



Immunohistochemistry of paraffin-embedded human prostate cancer using PACO42150 at dilution of 1:100.



Immunohistochemistry of paraffin-embedded human testis tissue using PACO42150 at dilution of 1:100.