

## Product Information

**Size:**

50ug

**Reactivity:**

Human

**Source:**

Rabbit

**Isotype:**

IgG

**Applications:**

ELISA, IHC

**Recommended dilutions:**

ELISA:1:2000-1:10000, IHC:1:20-1:200

**Protein Background:**

Stimulates guanine exchange activity of SOS1. May play a role in membrane ruffling and remodeling of the actin cytoskeleton.

**Gene ID:**

EPS8L2

**Uniprot**

Q9H6S3

**Synonyms:**

Epidermal growth factor receptor kinase substrate 8-like protein 2 (EPS8-like protein 2) (Epidermal growth factor receptor pathway substrate 8-related protein 2) (EPS8-related protein 2), EPS8L2, EPS8R2

**Immunogen:**

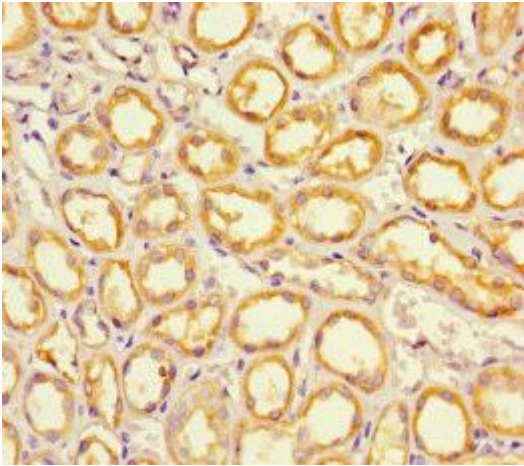
Recombinant Human Epidermal growth factor receptor kinase substrate 8-like protein 2 protein (201-500AA).

**Storage:**

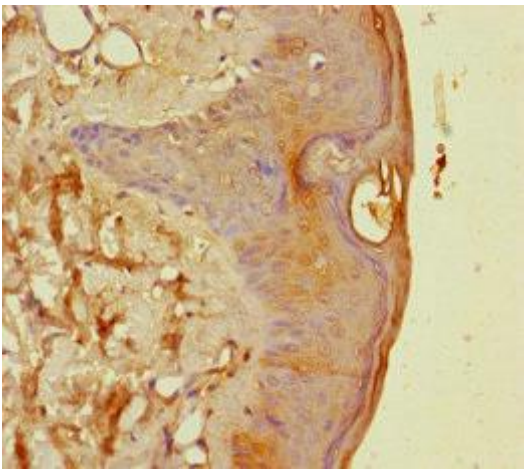
Preservative: 0.03% Proclin 300. Constituents: 50% Glycerol, 0.01M PBS, PH 7.4

## Product Images

---



Immunohistochemistry of paraffin-embedded human kidney tissue using PACO42186 at dilution of 1:100.



Immunohistochemistry of paraffin-embedded human skin tissue using PACO42186 at dilution of 1:100.