

# PRTFDC1 Antibody



PACO42234

---

## Product Information

**Size:**

50ug

**Reactivity:**

Human

**Source:**

Rabbit

**Isotype:**

IgG

**Applications:**

ELISA, IHC

**Recommended dilutions:**

ELISA:1:2000-1:10000, IHC:1:20-1:200

**Protein Background:**

Has low, barely detectable phosphoribosyltransferase activity (in vitro). Binds GMP, IMP and alpha-D-5-phosphoribosyl 1-pyrophosphate (PRPP). Is not expected to contribute to purine metabolism or GMP salvage.

**Gene ID:**

PRTFDC1

**Uniprot**

Q9NRG1

**Synonyms:**

Phosphoribosyltransferase domain-containing protein 1, PRTFDC1, HHGP

**Immunogen:**

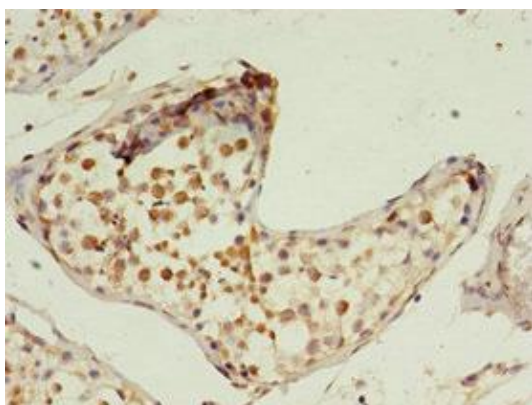
Recombinant Human Phosphoribosyltransferase domain-containing protein 1 (2-225AA).

**Storage:**

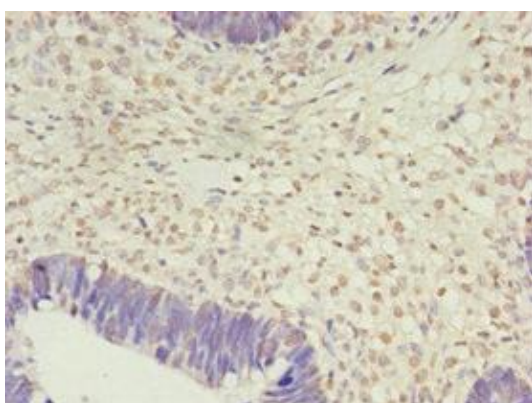
Preservative: 0.03% Proclin 300. Constituents: 50% Glycerol, 0.01M PBS, PH 7.4

## Product Images

---



Immunohistochemistry of paraffin-embedded human testis tissue using PACO42234 at dilution of 1:100.



Immunohistochemistry of paraffin-embedded human ovarian cancer using PACO42234 at dilution of 1:100.