

PLCXD1 Antibody



PACO42242

Product Information

Size:

50ug

Reactivity:

Human

Source:

Rabbit

Isotype:

IgG

Applications:

ELISA, WB, IHC

Recommended dilutions:

ELISA:1:2000-1:10000, WB:1:1000-1:5000,
IHC:1:20-1:200

Protein Background:

Gene ID:

PLCXD1

Uniprot

Q9NUJ7

Synonyms:

PI-PLC X domain-containing protein 1, PLCXD1

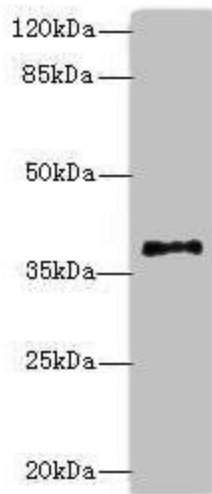
Immunogen:

Recombinant Human PI-PLC X domain-containing protein 1 protein (1-323AA).

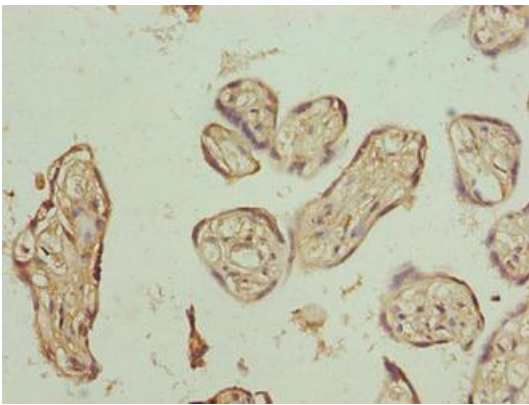
Storage:

Preservative: 0.03% Proclin 300. Constituents: 50% Glycerol, 0.01M PBS, PH 7.4

Product Images



Western blot. All lanes: PLCXD1 antibody at 2 μ g/ml + Jurkat whole cell lysate. Secondary. Goat polyclonal to rabbit IgG at 1/10000 dilution. Predicted band size: 37 kDa. Observed band size: 37 kDa.



Immunohistochemistry of paraffin-embedded human placenta tissue using PACO42242 at dilution of 1:100.