

C6orf203 Antibody



PACO42298

Product Information

Size:

50ug

Reactivity:

Human

Source:

Rabbit

Isotype:

IgG

Applications:

ELISA, IHC

Recommended dilutions:

ELISA:1:2000-1:10000, IHC:1:20-1:200

Protein Background:

mitochondrion.

Gene ID:

C6orf203

Uniprot

Q9POP8

Synonyms:

Uncharacterized protein C6orf203, C6orf203

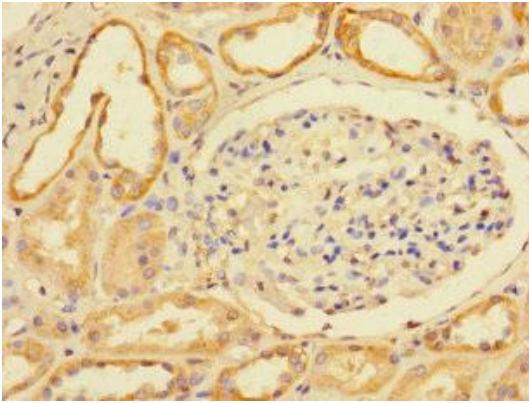
Immunogen:

Recombinant Human Uncharacterized protein C6orf203 protein (11-240AA).

Storage:

Preservative: 0.03% Proclin 300. Constituents: 50% Glycerol, 0.01M PBS, PH 7.4

Product Images



Immunohistochemistry of paraffin-embedded human kidney tissue using PACO42298 at dilution of 1:100.