

PACO42326

Product Information

Size:

50ug

Reactivity:

Human

Source:

Rabbit

Isotype:

IgG

Applications:

ELISA, WB, IHC

Recommended dilutions:

ELISA:1:2000-1:10000, WB:1:1000-1:5000,
IHC:1:20-1:200

Protein Background:

Binds specifically to the 3'-terminal U-tract of U6 snRNA and is probably a component of the spliceosome.

Gene ID:

LSM7

Uniprot

Q9UK45

Synonyms:

U6 snRNA-associated Sm-like protein LSm7, LSM7

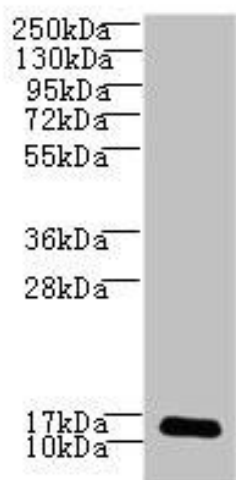
Immunogen:

Recombinant Human U6 snRNA-associated Sm-like protein LSm7 protein (2-103AA).

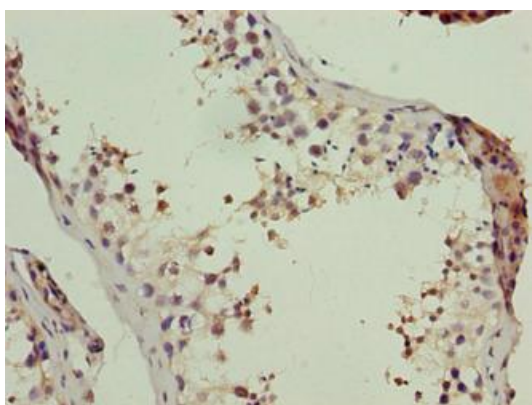
Storage:

Preservative: 0.03% Proclin 300. Constituents: 50% Glycerol, 0.01M PBS, PH 7.4

Product Images



Western blot. All lanes: LSM7 antibody at 3 μ g/ml + HepG2 whole cell lysate. Secondary. Goat polyclonal to rabbit IgG at 1/10000 dilution. Predicted band size: 12 kDa. Observed band size: 12 kDa.



Immunohistochemistry of paraffin-embedded human testis tissue using PACO42326 at dilution of 1:100.