

PACO42334

Product Information

Size:

50ug

Reactivity:

Human

Source:

Rabbit

Isotype:

IgG

Applications:

ELISA, IHC, IF

Recommended dilutions:

ELISA:1:2000-1:10000, IHC:1:20-1:200,
IF:1:50-1:200

Protein Background:

Paired receptors consist of highly related activating and inhibitory receptors and are widely involved in the regulation of the immune system. PILRB is thought to act as a cellular signaling activating receptor that associates with ITAM-bearing adapter molecules on the cell surface.

Gene ID:

PILRB

Uniprot

Q9UKJ0

Synonyms:

Paired immunoglobulin-like type 2 receptor beta (Activating receptor PILR-beta) (Cell surface receptor FDFACT), PILRB, FDFACT

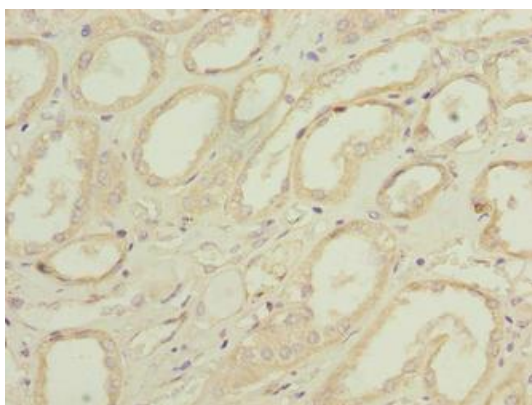
Immunogen:

Recombinant Human Paired immunoglobulin-like type 2 receptor β protein (20-191AA).

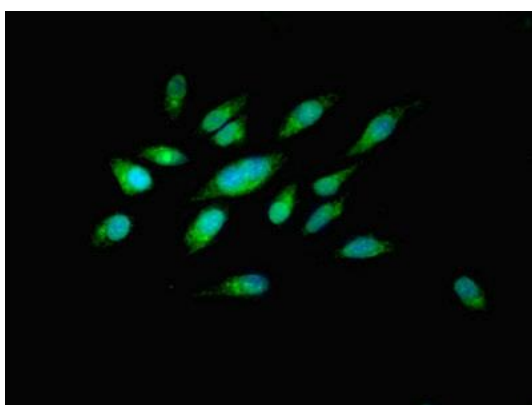
Storage:

Preservative: 0.03% Proclin 300. Constituents: 50% Glycerol, 0.01M PBS, PH 7.4

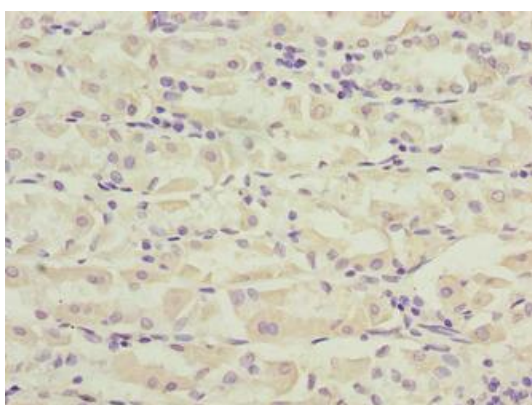
Product Images



Immunohistochemistry of paraffin-embedded human kidney tissue using PACO42334 at dilution of 1:100.



Immunofluorescent analysis of HeLa cells using PACO42334 at dilution of 1:100 and Alexa Fluor 488-conjugated AffiniPure Goat Anti-Rabbit IgG(H+L).



Immunohistochemistry of paraffin-embedded human gastric cancer using PACO42334 at dilution of 1:100.