

ANGPTL2 Antibody



PACO42374

Product Information

Size:

50ug

Reactivity:

Human, Mouse

Source:

Rabbit

Isotype:

IgG

Applications:

ELISA, WB, IHC

Recommended dilutions:

ELISA:1:2000-1:10000, WB:1:500-1:2000,
IHC:1:20-1:200

Protein Background:

Induces sprouting in endothelial cells through an autocrine and paracrine action.

Gene ID:

ANGPTL2

Uniprot

Q9UKU9

Synonyms:

Angiotensin-related protein 2 (Angiotensin-like protein 2), ANGPTL2, ARP2

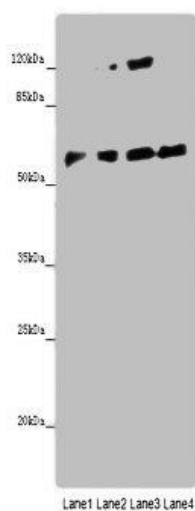
Immunogen:

Recombinant Human Angiotensin-related protein 2 protein (23-493AA).

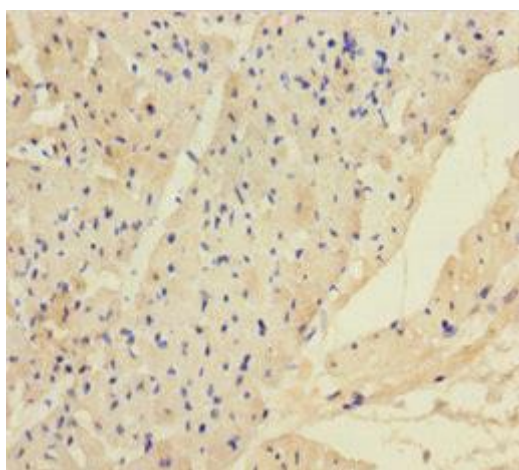
Storage:

Preservative: 0.03% Proclin 300. Constituents: 50% Glycerol, 0.01M PBS, PH 7.4

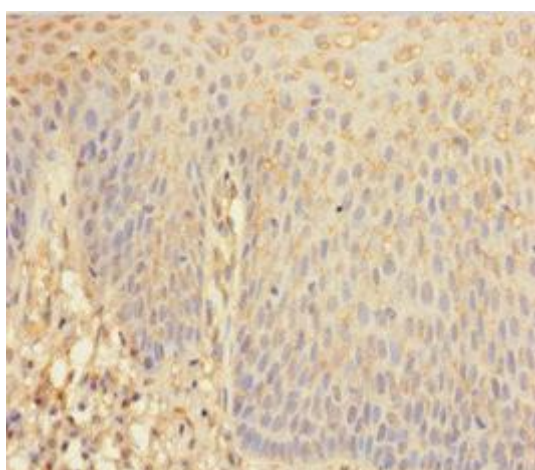
Product Images



Western blot. All lanes: ANGPTL2 antibody at 8 μ g/ml. Lane 1: Mouse spleen tissue. Lane 2: K562 whole cell lysate. Lane 3: Hela whole cell lysate. Lane 4: A549 whole cell lysate. Secondary. Goat polyclonal to rabbit IgG at 1/10000 dilution. Predicted band size: 58, 23 kDa. Observed band size: 58 kDa.



Immunohistochemistry of paraffin-embedded human heart tissue using PACO42374 at dilution of 1:100.



Immunohistochemistry of paraffin-embedded human tonsil tissue using PACO42374 at dilution of 1:100.