

PSG11 Antibody



PACO42406

Product Information

Size:

50ug

Reactivity:

Human

Source:

Rabbit

Isotype:

IgG

Applications:

ELISA, WB

Recommended dilutions:

ELISA:1:2000-1:10000, WB:1:500-1:2000

Protein Background:

female pregnancy.

Gene ID:

PSG11

Uniprot

Q9UQ72

Synonyms:

Pregnancy-specific beta-1-glycoprotein 11 (PS-beta-G-11) (PSBG-11) (Pregnancy-specific glycoprotein 11) (Pregnancy-specific beta-1-glycoprotein 13) (PS-beta-G-13) (PSBG-13) (Pregnancy-specific glycoprotein 13), PSG11, PSG13 PSG14

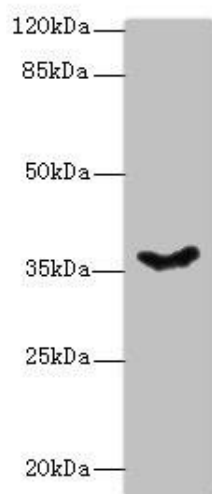
Immunogen:

Recombinant Human Pregnancy-specific beta-1-glycoprotein 11 protein (7-219AA).

Storage:

Preservative: 0.03% Proclin 300. Constituents: 50% Glycerol, 0.01M PBS, PH 7.4

Product Images



Western blot. All lanes: PSG11 antibody at 12 μ g/ml + HeLa whole cell lysate. Secondary. Goat polyclonal to rabbit IgG at 1/10000 dilution. Predicted band size: 38, 24 kDa. Observed band size: 38 kDa.