

# MAGED2 Antibody



PACO42458

---

## Product Information

**Size:**

50ug

**Reactivity:**

Human

**Source:**

Rabbit

**Isotype:**

IgG

**Applications:**

ELISA, WB, IHC, IF, IP

**Recommended dilutions:**

ELISA:1:2000-1:10000, WB:1:1000-1:5000,  
IHC:1:200-1:500, IF:1:50-1:200, IP:1:200-  
1:2000,

**Protein Background:**

membrane.

**Gene ID:**

MAGED2

**Uniprot**

Q9UNF1

**Synonyms:**

Melanoma-associated antigen D2 (11B6) (Breast cancer-associated gene 1 protein) (BCG-1) (Hepatocellular carcinoma-associated protein JCL-1) (MAGE-D2 antigen), MAGED2, BCG1

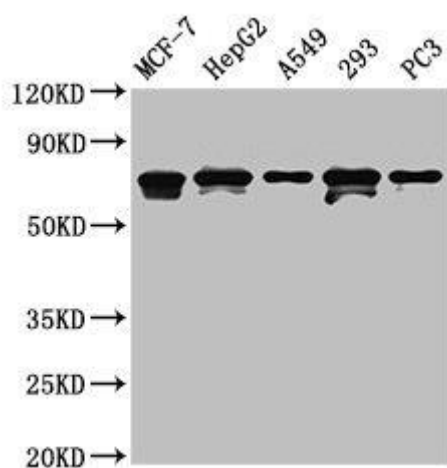
**Immunogen:**

Recombinant Human Melanoma-associated antigen D2 protein (38-285AA).

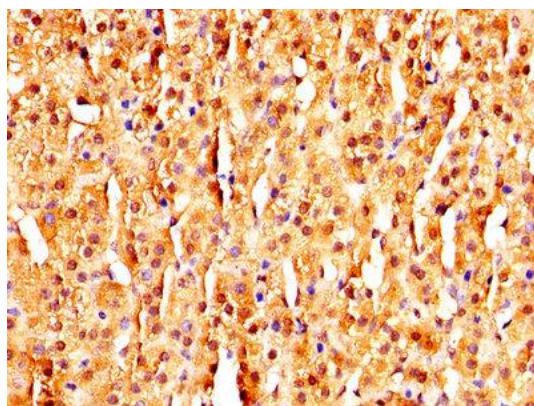
**Storage:**

Preservative: 0.03% Proclin 300. Constituents: 50% Glycerol, 0.01M PBS, PH 7.4

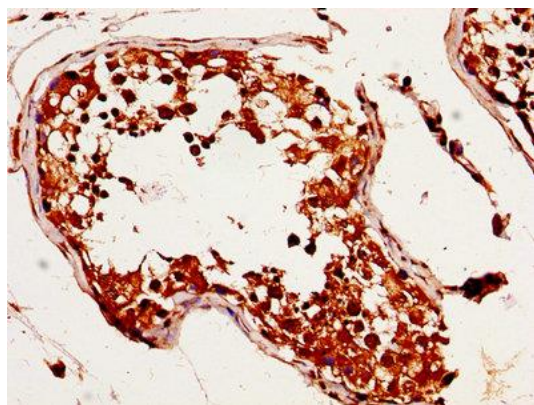
## Product Images



Western Blot. Positive WB detected in: MCF-7 whole cell lysate, HepG2 whole cell lysate, A549 whole cell lysate, 293 whole cell lysate, PC-3 whole cell lysate. All lanes: MAGED2 antibody at 4.5µg/ml. Secondary. Goat polyclonal to rabbit IgG at 1/50000 dilution. Predicted band size: 65, 64 kDa. Observed band size: 65, 64 kDa.



IHC image of PACO42458 diluted at 1:320 and staining in paraffin-embedded human adrenal gland tissue performed on a Leica Bond™ system. After dewaxing and hydration, antigen retrieval was mediated by high pressure in a citrate buffer (pH 6.0). Section was blocked with 10% normal goat serum 30min at RT. Then primary antibody (1% BSA) was incubated at 4°C overnight. The primary is detected by a biotinylated secondary antibody and visualized using an HRP conjugated SP system.



IHC image of PACO42458 diluted at 1:320 and staining in paraffin-embedded human testis tissue performed on a Leica Bond™ system. After dewaxing and hydration, antigen retrieval was mediated by high pressure in a citrate buffer (pH 6.0). Section was blocked with 10% normal goat serum 30min at RT. Then primary antibody (1% BSA) was incubated at 4°C overnight. The primary is detected by a biotinylated secondary antibody and visualized using an HRP conjugated SP system.