

# MCTS1 Antibody



PACO42478

---

## Product Information

**Size:**

50ug

**Reactivity:**

Human

**Source:**

Rabbit

**Isotype:**

IgG

**Applications:**

ELISA, IHC, IF

**Recommended dilutions:**

ELISA:1:2000-1:10000, IHC:1:20-1:200,  
IF:1:200-1:500

**Protein Background:**

**Gene ID:**

MCTS1

**Uniprot**

Q9ULC4

**Synonyms:**

Malignant T-cell-amplified sequence 1 (MCT-1) (Multiple copies T-cell malignancies),  
MCTS1, MCT1

**Immunogen:**

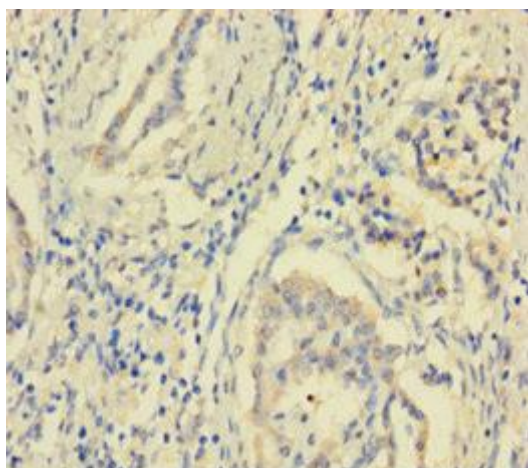
Recombinant Human Malignant T-cell-amplified sequence 1 protein (1-181AA).

**Storage:**

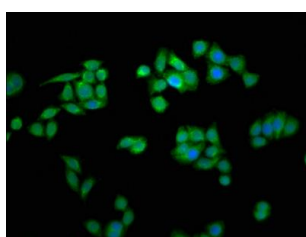
Preservative: 0.03% Proclin 300. Constituents: 50% Glycerol, 0.01M PBS, PH 7.4

## Product Images

---



Immunohistochemistry of paraffin-embedded human pancreatic cancer using PACO42478 at dilution of 1:100.



Immunofluorescence staining of PC-3 cells with PACO42478 at 1:266, counter-stained with DAPI. The cells were fixed in 4% formaldehyde, permeabilized using 0.2% Triton X-100 and blocked in 10% normal Goat Serum. The cells were then incubated with the antibody overnight at 4°C. The secondary antibody was Alexa Fluor 488-conjugated AffiniPure Goat Anti-Rabbit IgG(H+L).