

PACO42498

Product Information

Size:

50ug

Reactivity:

Human

Source:

Rabbit

Isotype:

IgG

Applications:

ELISA, IHC

Recommended dilutions:

ELISA:1:2000-1:10000, IHC:1:20-1:200

Protein Background:

Potent circulating inhibitor of angiogenesis. Could be involved in bone formation. Signals through the type I activin receptor ACVRL1 but not other Alks. Signaling through SMAD1 in endothelial cells requires TGF-beta coreceptor endoglin/ENG.

Gene ID:

GDF2

Uniprot

Q9UK05

Synonyms:

Growth/differentiation factor 2 (GDF-2) (Bone morphogenetic protein 9) (BMP-9), GDF2, BMP9

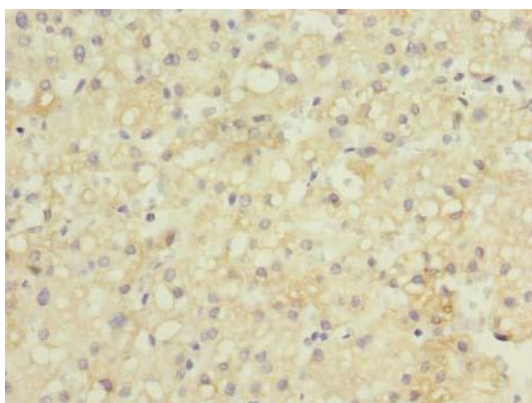
Immunogen:

Recombinant Human Growth/differentiation factor 2 protein (300-429AA).

Storage:

Preservative: 0.03% Proclin 300. Constituents: 50% Glycerol, 0.01M PBS, PH 7.4

Product Images



Immunohistochemistry of paraffin-embedded human liver cancer using PACO42498 at dilution of 1:100.