

DKKL1 Antibody



PACO42550

Product Information

Size:

50ug

Reactivity:

Human

Source:

Rabbit

Isotype:

IgG

Applications:

ELISA, IHC

Recommended dilutions:

ELISA:1:2000-1:10000, IHC:1:20-1:200

Protein Background:

extracellular space, signal transducer activity, anatomical structure morphogenesis, mitophagy in response to mitochondrial depolarization, positive regulation of defense response to virus by host, signal transduction, xenophagy.

Gene ID:

DKKL1

Uniprot

Q9UK85

Synonyms:

Dickkopf-like protein 1 (Cancer/testis antigen 34) (CT34) (Protein soggy-1) (SGY-1), DKKL1, SGY1

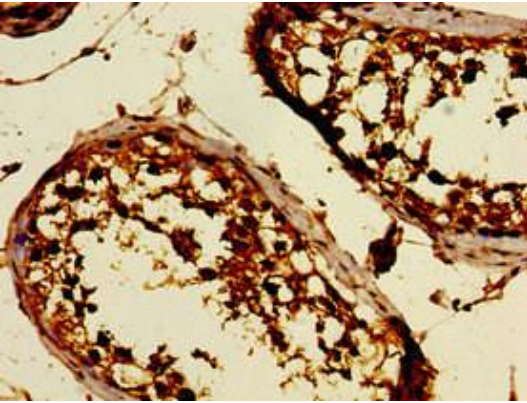
Immunogen:

Recombinant Human Dickkopf-like protein 1 protein (31-242AA).

Storage:

Preservative: 0.03% Proclin 300. Constituents: 50% Glycerol, 0.01M PBS, PH 7.4

Product Images



Immunohistochemistry of paraffin-embedded human testis tissue using PACO42550 at dilution of 1:100.