

PACO42562

Product Information

Size:

50ug

Reactivity:

Human, Mouse

Source:

Rabbit

Isotype:

IgG

Applications:

ELISA, WB, IF

Recommended dilutions:

ELISA:1:2000-1:10000, WB:1:1000-1:5000,
IF:1:50-1:200

Protein Background:

Potassium channel subunit that does not form functional channels by itself. Can form functional heterotetrameric channels with KCNB1 and KCNB2; modulates the delayed rectifier voltage-gated potassium channel activation and deactivation rates of KCNB1 and KCNB2.

Gene ID:

KCNS2

Uniprot

Q9ULS6

Synonyms:

Potassium voltage-gated channel subfamily S member 2 (Delayed-rectifier K(+) channel alpha subunit 2) (Voltage-gated potassium channel subunit Kv9.2), KCNS2, KIAA1144

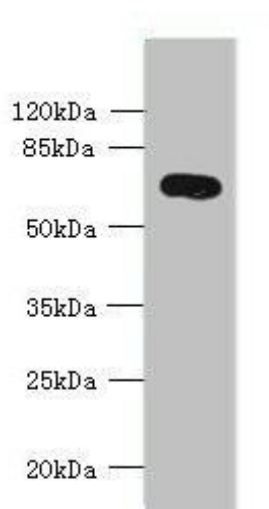
Immunogen:

Recombinant Human Potassium voltage-gated channel subfamily S member 2 protein (1-183AA).

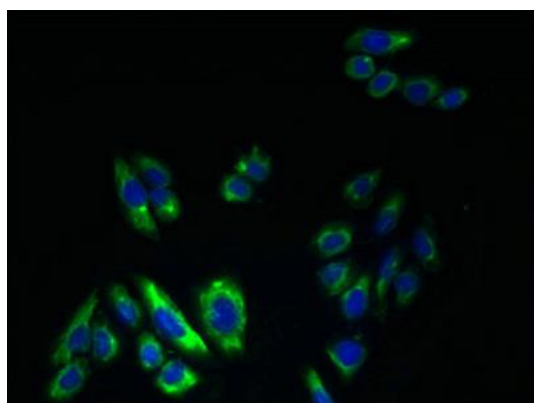
Storage:

Preservative: 0.03% Proclin 300. Constituents: 50% Glycerol, 0.01M PBS, PH 7.4

Product Images



Western blot. All lanes: KCNS2 antibody at 4 μ g/ml + Mouse eye tissue. Secondary. Goat polyclonal to rabbit IgG at 1/10000 dilution. Predicted band size: 54 kDa. Observed band size: 54 kDa.



Immunofluorescent analysis of HepG2 cells using PACO42562 at dilution of 1:100 and Alexa Fluor 488-conjugated AffiniPure Goat Anti-Rabbit IgG(H+L).