

PACO42566

Product Information

Size:

50ug

Reactivity:

Human

Source:

Rabbit

Isotype:

IgG

Applications:

ELISA, WB, IHC

Recommended dilutions:

ELISA:1:2000-1:10000, WB:1:500-1:2000,
IHC:1:20-1:200

Protein Background:

Key regulator of ligase activity of the anaphase promoting complex/cyclosome (APC/C), which confers substrate specificity upon the complex. Associates with the APC/C in late mitosis, in replacement of CDC20, and activates the APC/C during anaphase and telophase. The APC/C remains active in degrading substrates to ensure that positive regulators of the cell cycle do not accumulate prematurely. At the G1/S transition FZR1 is phosphorylated, leading to its dissociation from the APC/C. Following DNA damage, it is required for the G2 DNA damage checkpoint: its dephosphorylation and reassociation with the APC/C leads to the ubiquitination of PLK1, preventing entry into mitosis.

Gene ID:

FZR1

Uniprot

Q9UM11

Synonyms:

Fizzy-related protein homolog (Fzr) (CDC20-like protein 1) (Cdh1/Hct1 homolog) (hCDH1), FZR1, CDH1 FYR FZR KIAA1242

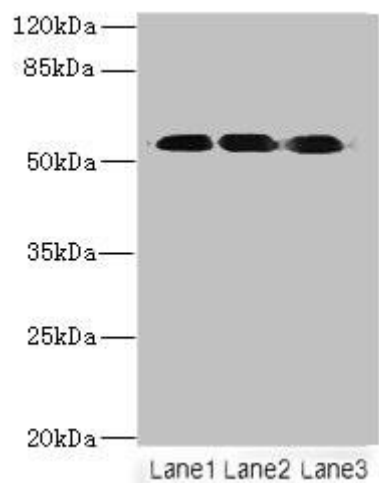
Immunogen:

Recombinant Human Fizzy-related protein homolog protein (1-493AA).

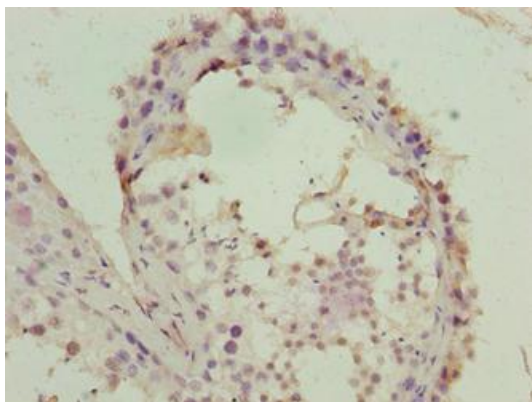
Storage:

Preservative: 0.03% Proclin 300. Constituents: 50% Glycerol, 0.01M PBS, PH 7.4

Product Images



Western blot. All lanes: FZR1 antibody at 6 μ g/ml. Lane 1: HeLa whole cell lysate. Lane 2: Jurkat whole cell lysate. Lane 3: 293T whole cell lysate. Secondary. Goat polyclonal to rabbit IgG at 1/10000 dilution. Predicted band size: 56, 55, 45 kDa. Observed band size: 56 kDa.



Immunohistochemistry of paraffin-embedded human testis tissue using PACO42566 at dilution of 1:100.