

PACO42570

Product Information

Size:

50ug

Reactivity:

Human

Source:

Rabbit

Isotype:

IgG

Applications:

ELISA, IHC

Recommended dilutions:

ELISA:1:2000-1:10000, IHC:1:20-1:200

Protein Background:

Serine/arginine-rich protein-specific kinase which specifically phosphorylates its substrates at serine residues located in regions rich in arginine/serine dipeptides, known as RS domains. Phosphorylates the SR splicing factor SRSF1 and the lamin-B receptor (LBR) in vitro. Required for normal muscle development.

Gene ID:

SRPK3

Uniprot

Q9UPE1

Synonyms:

SRSF protein kinase 3 (EC 2.7.11.1) (Muscle-specific serine kinase 1) (MSSK-1) (Serine/arginine-rich protein-specific kinase 3) (SR-protein-specific kinase 3) (Serine/threonine-protein kinase 23), SRPK3, MSSK1 STK23

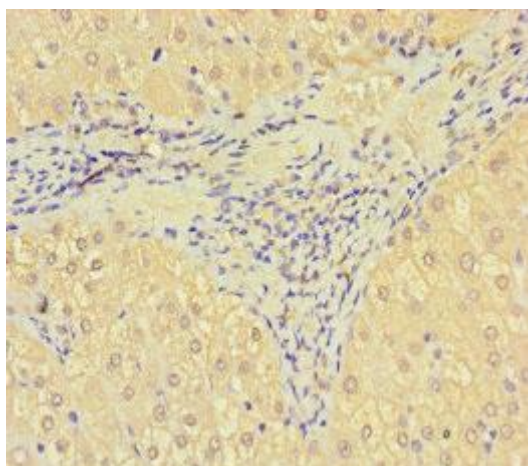
Immunogen:

Recombinant Human SRSF protein kinase 3 protein (1-300AA).

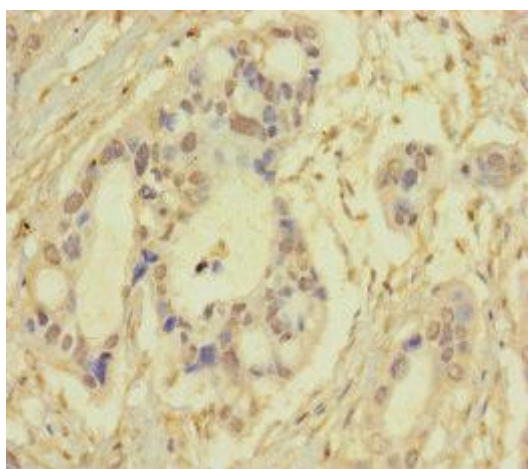
Storage:

Preservative: 0.03% Proclin 300. Constituents: 50% Glycerol, 0.01M PBS, PH 7.4

Product Images



Immunohistochemistry of paraffin-embedded human liver tissue using PACO42570 at dilution of 1:100.



Immunohistochemistry of paraffin-embedded human pancreatic cancer using PACO42570 at dilution of 1:100.