

STK38L Antibody



PACO42594

Product Information

Size:

50ug

Reactivity:

Human

Source:

Rabbit

Isotype:

IgG

Applications:

ELISA, WB, IHC

Recommended dilutions:

ELISA:1:2000-1:10000, WB:1:500-1:2000,
IHC:1:20-1:200

Protein Background:

Involved in the regulation of structural processes in differentiating and mature neuronal cells.

Gene ID:

STK38L

Uniprot

Q9Y2H1

Synonyms:

Serine/threonine-protein kinase 38-like (EC 2.7.11.1) (NDR2 protein kinase) (Nuclear Dbf2-related kinase 2), STK38L, KIAA0965 NDR2

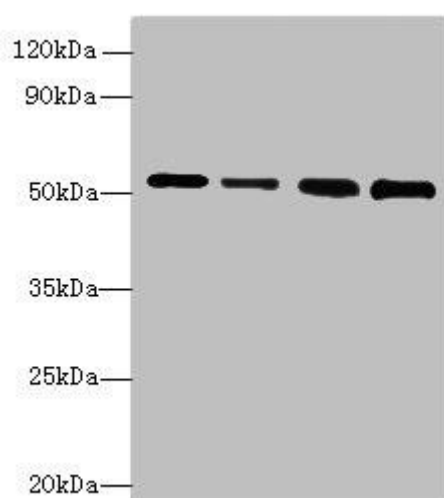
Immunogen:

Recombinant Human Serine/threonine-protein kinase 38-like protein (212-464AA).

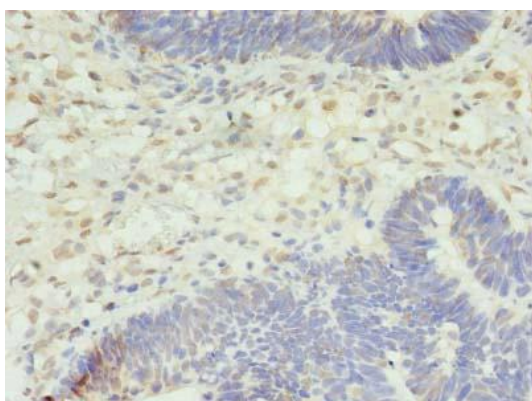
Storage:

Preservative: 0.03% Proclin 300. Constituents: 50% Glycerol, 0.01M PBS, PH 7.4

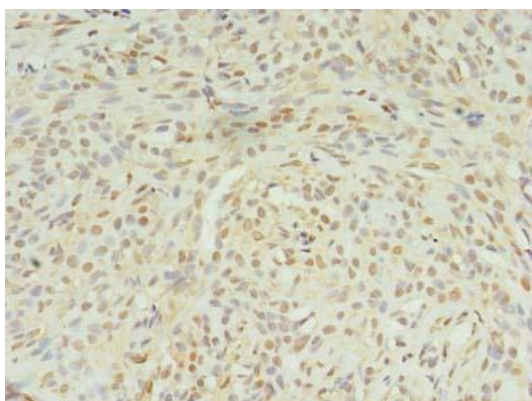
Product Images



Western blot. All lanes: STK38L antibody at 6 μ g/ml. Lane 1: A375 whole cell lysate. Lane 2: HepG2 whole cell lysate. Lane 3: A549 whole cell lysate. Lane 4: HCT116 whole cell lysate. Secondary. Goat polyclonal to rabbit IgG at 1/10000 dilution. Predicted band size: 55, 44 kDa. Observed band size: 55 kDa.



Immunohistochemistry of paraffin-embedded human ovarian cancer using PACO42594 at dilution of 1:100.



Immunohistochemistry of paraffin-embedded human breast cancer using PACO42594 at dilution of 1:100.