

# LRRC42 Antibody



PACO42730

---

## Product Information

**Size:**

50ug

**Reactivity:**

Human

**Source:**

Rabbit

**Isotype:**

IgG

**Applications:**

ELISA, WB, IHC

**Recommended dilutions:**

ELISA:1:2000-1:10000, WB:1:1000-1:5000,  
IHC:1:20-1:200

**Protein Background:**

**Gene ID:**

LRRC42

**Uniprot**

Q9Y546

**Synonyms:**

Leucine-rich repeat-containing protein 42, LRRC42

**Immunogen:**

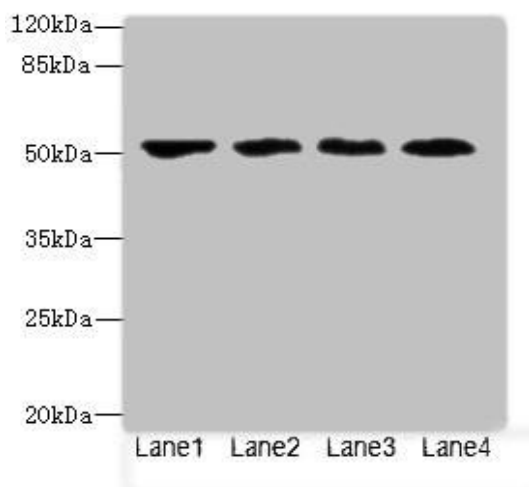
Recombinant Human Leucine-rich repeat-containing protein 42 protein (201-428AA).

**Storage:**

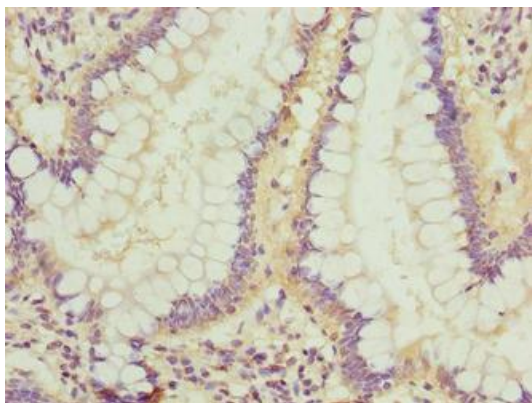
Preservative: 0.03% Proclin 300. Constituents: 50% Glycerol, 0.01M PBS, PH 7.4

## Product Images

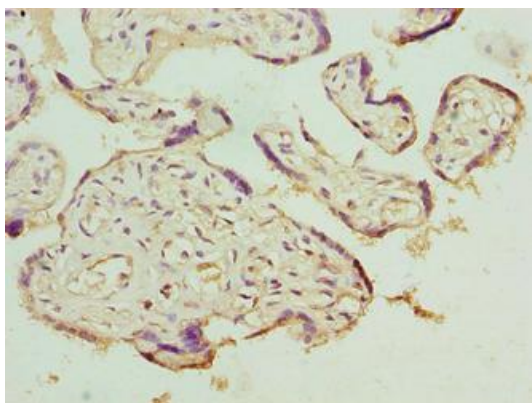
---



Western blot. All lanes: LRRC42 antibody at 10 $\mu$ g/ml. Lane 1: MCF-7 whole cell lysate. Lane 2: A549 whole cell lysate. Lane 3: HCT116 whole cell lysate. Lane 4: Colo320 whole cell lysate. Secondary. Goat polyclonal to rabbit IgG at 1/10000 dilution. Predicted band size: 49 kDa. Observed band size: 49 kDa.



Immunohistochemistry of paraffin-embedded human small intestine tissue using PACO42730 at dilution of 1:100.



Immunohistochemistry of paraffin-embedded human placenta tissue using PACO42730 at dilution of 1:100.