

# MRPS2 Antibody



PACO42786

---

## Product Information

**Size:**

50ug

**Reactivity:**

Human

**Source:**

Rabbit

**Isotype:**

IgG

**Applications:**

ELISA, WB

**Recommended dilutions:**

ELISA:1:2000-1:10000, WB:1:1000-1:5000

**Protein Background:**

mitochondrial small ribosomal subunit, mitochondrion, structural constituent of ribosome, mitochondrial translation, mitophagy in response to mitochondrial depolarization, positive regulation of defense response to virus by host, translation, xenophagy.

**Gene ID:**

MRPS2

**Uniprot**

Q9Y399

**Synonyms:**

28S ribosomal protein S2, mitochondrial (MRP-S2) (S2mt) (Mitochondrial small ribosomal subunit protein uS2m), MRPS2

**Immunogen:**

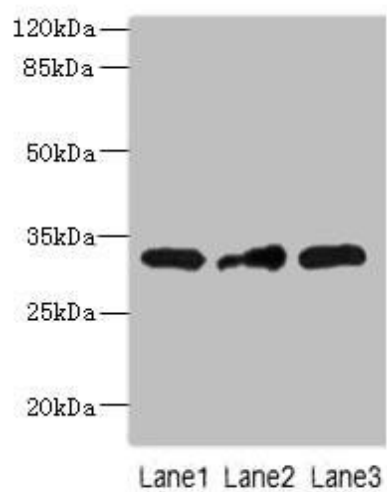
Recombinant Human 28S ribosomal protein S2, mitochondrial protein (1-296AA).

**Storage:**

Preservative: 0.03% Proclin 300. Constituents: 50% Glycerol, 0.01M PBS, PH 7.4

## Product Images

---



Western blot. All lanes: MRPS2 antibody at 2.5 $\mu$ g/ml. Lane 1: HepG2 whole cell lysate. Lane 2: U251 whole cell lysate. Lane 3: MCF-7 whole cell lysate. Secondary. Goat polyclonal to rabbit IgG at 1/10000 dilution. Predicted band size: 33 kDa. Observed band size: 33 kDa.